

**Concord School District**  
**Enrollment Report**  
October 2013

**Office of the Superintendent  
Concord School District  
Concord, NH 03301**

Date: October 18, 2013  
TO: Concord School Board Members  
FROM: Christine Rath, Superintendent of Schools

On the following pages we have compiled the Fall 2013 School and Class Enrollment Reports as of September 26, 2013 and Staffing Summary as of October 1, 2013. We have updated the historical enrollment information so we can continue to track trends in enrollments at the different levels, schools and grades in the District. Following are our notes regarding student enrollments and staffing.

**Student Enrollments**

District (page 1)

- The total student enrollment, K to 12, for Fall 2013 is 4,689 students, 65 fewer students than Fall 2012 and 658 fewer students than Fall 2003. The decrease this fall comes at the middle school level (-55) and at the high school level (-27). There was actually a small increase in the number of students K to 5 (+17).

Elementary by School (page 2)

- The total enrollments for two elementary schools continued to decrease compared to last year: Beaver Meadow (-4) and Christa McAuliffe (-6) with no change at Mill Brook. Two elementary schools increased in enrollments, Broken Ground (+19) and Abbot-Downing (+8).
- Over the 11-year period, the elementary enrollment has decreased 11%.
- The biggest decrease in student enrollment has occurred on the west side of the river, with the most significant decrease at Beaver Meadow School (-23%) over the 11-year period.
- The decreases at Abbot-Downing/Conant/Rumford (-15%) and Christa McAuliffe/Kimball/Walker (-13%) have been comparable.
- On the east side, Broken Ground's population decreased by just 5% and Mill Brook/Dame/Eastman's population has actually increased by 7% over the 11 year period.

#### Elementary by Grade (page 3)

- The decrease in enrollments has been fairly consistent across the grades over the 11-year period. The larger decrease in grade 4 appears to be influenced by the last class over 400 that was in the 4<sup>th</sup> grade in 2003-2004.
- There is an increase in grade 1 students (compared to previous year's kindergarten enrollments) because of both the number of students who have not attended district kindergartens, and traditional move-ins.

#### Elementary by Class and Class Size (pages 4, 5 and 6)

- The enrollments for elementary classes for Fall 2013 fall within the School Board's policy at kindergarten (14 to 20 with average of 17) and primary levels (18 to 24 with average of 21).
- No kindergarten class exceeds the upper limit of 20 and no primary class exceeds the upper limit of 24.
- The class sizes for classes at grades 4 and 5, the intermediate level, fall well within the guidelines (22 to 28 with an average of 24). Fourteen of the 32 classes in grades 4 and 5 actually fall below the lower limit of 22.

#### Middle School (page 7)

- The enrollment at Rundlett Middle School has fallen below 1,000 students for the first time in history.

#### Middle School by Department (page 8)

- The class size averages for classes at Rundlett range from low of 18.6 in Art to a high of 28 in French and 28.5 in Spanish, still within the School Board guidelines.

#### Middle School Performing Groups (page 9)

- The percentage of students at Rundlett participating in a performing group is approximately 58% (although there is some double counting, as some students participate in more than one group). This is a decrease from the previous two years, but increased over 2009-2010 and 2010-2011. This may represent the change in schedule to enable students to participate in more than one group.
- Second semester there will be 58 additional participants in groups, bringing the overall percentage of participation to a high of 64%.
- Band 8 and Chorus 8 show increasing participation over the five years.

### High School (page 10)

- The total high school enrollment of 1,722 students represents the smallest total enrollment since becoming a 4-year high school.
- Some of the decrease in total enrollment can be attributed to the smaller number of students from Deerfield attending CHS. In 2007-2008 there were 69 students from Deerfield entering as freshmen; in 2013-2014, there are 45, a decrease of 35%. Some of this decrease is due to smaller classes; some is due to Deerfield students electing to attend charter schools or private schools.

### High School by Department and Class Size (pages 11, 12)

- The class size averages for all departments fall within the School Board policy guidelines of 15 to 30 students per class. The average across all departments is 22.9.
- There are 12 classes with enrollments below the lower guideline of 15 students per class. Two of these are AP classes. There are no classes that exceed 30.
- The enrollment of students by department shows increased enrollments in Business, Music and Science.
  - The increase in Business can be attributed to the addition of AP Economics to this Department.
  - The increase in Music represents the increasing numbers of students in high school Band.
  - The increase in Science is due to the increase in elective offerings, move of Psychology from the Wellness Department to the Science Department and the requirement that students take three courses in Science to fulfill the requirement (Biology, Physics and Chemistry.) There are students taking more than one Science class.
- The percent of students in Wellness courses does not include the students who will earn PE credit through the CHS Sport (230) or Athletic Certificate (2).

### Concord Regional Technical Center (pages 13, 14)

- The overall enrollment at the Regional Technical Center has remained very consistent for the past three years. This Fall there are 25 fewer Concord or Deerfield students enrolled and 27 more students from sending schools. The percent of students from Concord or Deerfield enrolled in Fall 2013 is 12% compared to 13% in Fall 2012.
- The Health Science and Technology program shows a steady increase over the four years shown.
- The new Fire Science program is scheduled to begin semester 2.

- The chart on page 14 shows enrollments by sending districts since 2003-2004. There have been increases in enrollments from Bow, Hillsboro, Hopkinton, Pembroke and Kearsarge.

#### Special Programs: Special Education (page 15)

- The percent of students in the school district with Individual Education Plans has remained relatively constant (16% - 17%).
- The percent of students with IEPs at the elementary and middle school levels has increased slightly over the four years; the percent at the high school has actually decreased. The percent at the high school level is impacted by the fact that students at the high school may remain enrolled until they are 21 years old.
- The number of students attending the 3R programs at the elementary and middle levels has remained relatively consistent. There has been a significant increase in the number of student reported attending the ADVANCE program at CHS.

#### Special Programs: Charter School, Diploma Academy, English Language Learners, and Homeschooled (pages 16, 17)

- The percent of students at the elementary and middle school levels attending the local charter school, Strong Foundations, has remained consistent over the past three years.
- The number of students attending the Diploma Academy program has increased over 2012-2013. These numbers change frequently as students take advantage of the flexible offerings.
- The percent of the population identified as English Language Learners (receiving direct services) has remained relatively consistent over the recent years. The higher percent of ELL students at Broken Ground and Mill Brook represent the district's program being located at these two schools.
- The number of students recorded as homeschooled has increased at the elementary and high school levels and remained consistent at the middle school level.

#### Transfers In (page 18)

- Two hundred eighty-five students transferred into the Concord School District for the 2013-2014 school year. This was 45 more students than transferred in for the 2012-2013 school year.
- The majority of the transfers in were students moving from other NH communities.
- Sixteen percent of the students transferring in were moving in from another state.
- Twenty percent of the students transferring in were coming from private schools.

- Twenty-six students moved in from other countries.

#### Transfers Out (page 19)

- Two hundred eighty-six students transferred out of the Concord School District as of the beginning of the 2013-2014 school year. This was 91 more students than the number that transferred out as of the beginning of the 2012-2013 school year.
- The majority of the students who transferred (43.7%) moved to other NH communities; 18% to other states, 14% to private school, 10% to charter schools and 6% to homeschooling.

### Staffing

As of October 1, 2013, there are 789.55 full-time-equivalent staff in the district.

#### Elementary School Staff (pages 20, 21)

- There is an increase of 8.8 full-time-equivalents in elementary staff. We have an additional 2.0 classroom teachers, partially offset by a reduction in reading specialist district-funded staff by 1.2 for a difference in professional staff of .8.
- There is an increase of 2.88 in teaching assistants and an increase of 4.75 in tutors. This increase in tutors is funded with Title I funds. There is an additional .44 in Food service staff.

#### Middle School Staff (pages 22, 23)

- There is a reduction of -3.12 in middle school staff. We reduced classroom teachers by 3, but added a technology integrator for a net decrease of 2.0 in classroom teachers and -0.4 in world language teachers. There is small reduction in teaching assistants and tutor full-time-equivalents (-.22) and a reduction in food service staff of -.5.

#### High School Staff (pages 24, 25)

- There is little total change in the high school staff for 2013-2014 (+0.24). There was a net reduction in classroom teachers at the high school of -.4, a small reduction in tutor staff of 0.01, a reduction in food service staff of -.76, and a reduction of -.10 for a teacher in the Diploma Academy, for a total reduction of -1.27. This is offset by an increase in teaching assistants of 1.51.

#### District Staff (pages 26, 27, 28)

- The district staff for 2013-2014 reflects a reduction of -1.88. This reflects an increase of .51, most of it in the Superintendent's reserve. These are FTEs that were not filled. There were reductions of -.29 in food service dispatcher and -2.2 in bus drivers.

**Concord School District Enrollment Report**

**October, 2013**

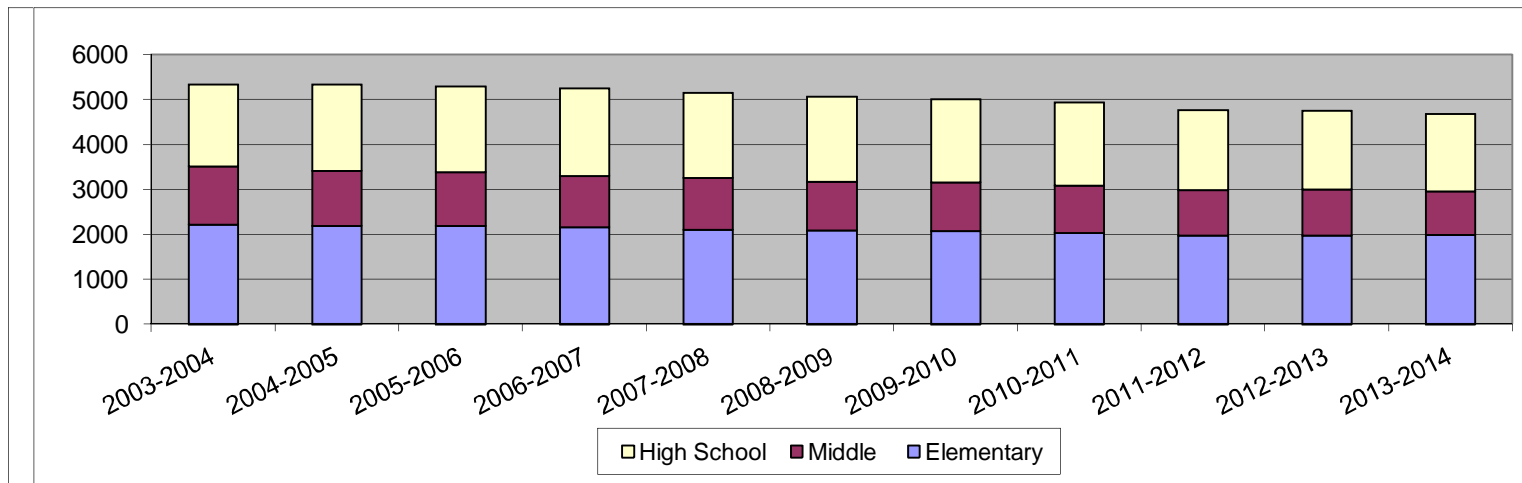
Concord School District Enrollments by Level – 11-Year History .....	1
Elementary K-5 Enrollment History by School – 11-Year History .....	2
Elementary K-5 Enrollments by Grade – 11-Year History .....	3
Elementary Enrollments by School, Grade and Class .....	4
Elementary Enrollments Class Size Information .....	5
Rundlett Middle School Enrollment by Grade – 7-Year History.....	7
Rundlett Middle School – Department Enrollments Fall 2013 .....	8
Rundlett Middle School Performing Group Enrollments – 4-Year History .....	9
Concord High School Enrollments – 7-Year Comparison.....	10
Concord High School Class Size Information Fall 2013 .....	11
High School Enrollment History 8-Year History – Classes < 15 and > 30 .....	12
CRTC Enrollments – 4-Year History .....	13
Special Education Enrollments – 4-Year Comparison.....	15
Reasons for Transfers Into Concord School District by September 13, 2013 .....	18
Summary of Reasons for Transfers Out of Concord School District as of September 13, 2013 .....	19

PreK to Grade 5 Staffing Summary – 4-Year History .....	20
Middle School Grades 6, 7 and 8 Staffing Summary – 4-Year History .....	23
High School Staffing Summary – 4-Year History .....	24
District Level Staffing – 4-Year History .....	26
Elementary Level Staffing 2011-2012, 2012-2013 and 2013-2014 .....	29
Middle School and High School Staffing 2011-2012, 2012-2013 and 2013-2014 .....	33



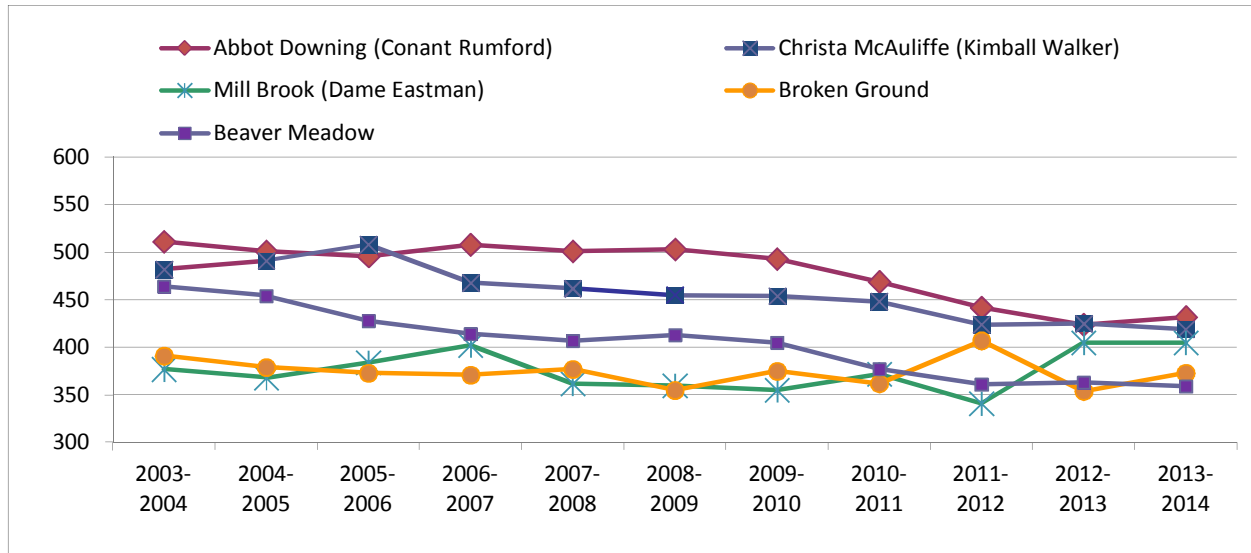
**Concord School District Enrollments by Level  
11 Year History**

<b>Level</b>	2003-2004	2004-2005	2005-2006	2006-2007	2007-2008	2008-2009	2009-2010	2010-2011	2011-2012	2012-2013	2013-2014	1 Yr Change
<b>Elementary</b>	<b>2225</b>	<b>2193</b>	<b>2190</b>	<b>2163</b>	<b>2109</b>	<b>2085</b>	<b>2082</b>	<b>2028</b>	<b>1975</b>	<b>1971</b>	<b>1988</b>	17
Difference		-32	-3	-27	-54	-24	-3	-54	-53	-4	17	
<b>Middle</b>	<b>1293</b>	<b>1225</b>	<b>1205</b>	<b>1142</b>	<b>1151</b>	<b>1087</b>	<b>1081</b>	<b>1065</b>	<b>1013</b>	<b>1034</b>	<b>979</b>	-55
Difference		-68	-20	-63	9	-64	-6	-16	-52	21	-55	
Concord	1675	1758	1708	1748	1681	1694	1649	1640	1583	1557	1532	-25
Deerfield	154	168	201	196	210	198	200	204	200	192	190	-2
<b>High School</b>	<b>1829</b>	<b>1926</b>	<b>1909</b>	<b>1944</b>	<b>1891</b>	<b>1892</b>	<b>1849</b>	<b>1844</b>	<b>1783</b>	<b>1749</b>	<b>1722</b>	-27
Difference		97	-17	35	-53	1	-43	-5	-61	-34	-65	
<b>District Total</b>	<b>5347</b>	<b>5344</b>	<b>5304</b>	<b>5249</b>	<b>5151</b>	<b>5064</b>	<b>5012</b>	<b>4937</b>	<b>4771</b>	<b>4754</b>	<b>4689</b>	-65
Difference		-3	-40	-55	-98	-87	-52	-75	-166	-17	-65	



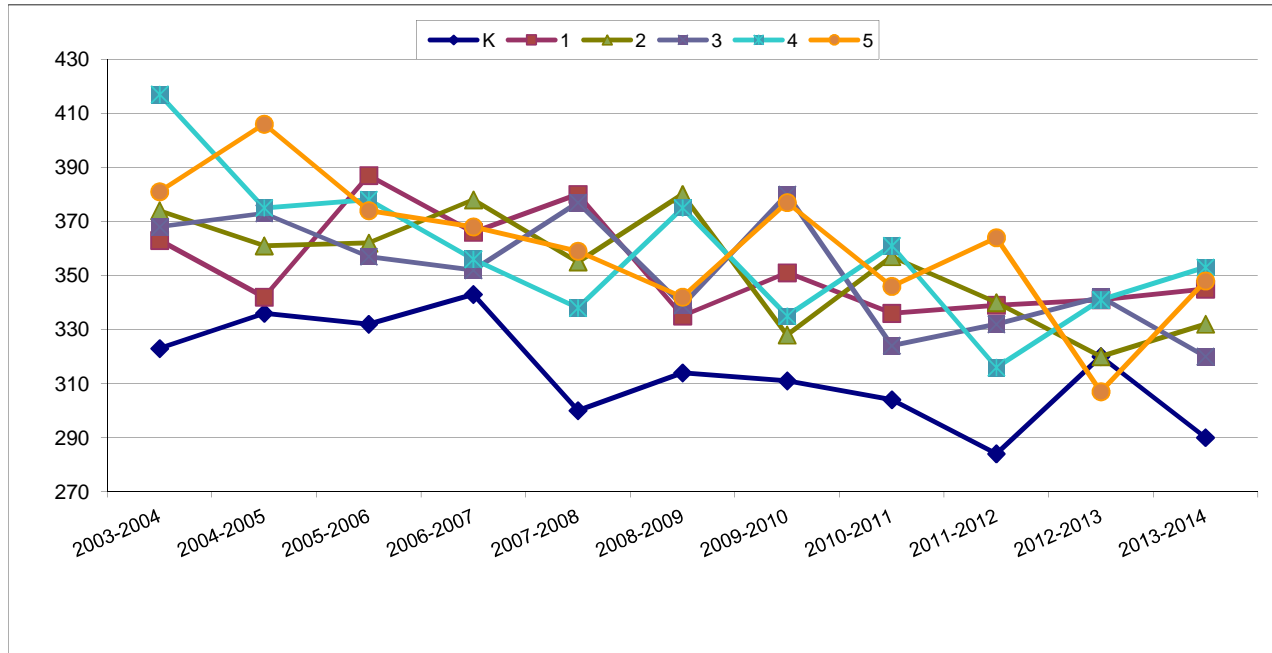
### Elementary K-5 Enrollment History by School 11 Year History

School	2003-2004	2004-2005	2005-2006	2006-2007	2007-2008	2008-2009	2009-2010	2010-2011	2011-2012	2012-2013	2013-2014	11 YR change	1 YR chg %	1 yr change	1 yr chg %
Beaver Meadow	464	454	428	414	407	413	405	377	361	363	359	-105	-23%	-4	-1%
Abbot Downing/Conant/Rumford	511	501	496	508	501	503	493	469	442	424	432	-79	-15%	8	2%
Christa McAuliffe/Kimball/Walker	482	491	508	468	462	455	454	448	424	425	419	-63	-13%	-6	-1%
Broken Ground	391	379	373	371	377	355	375	362	407	354	373	-18	-5%	19	5%
Mill Brook/Dame/Eastman	377	368	384	402	362	360	355	372	341	405	405	28	7%	0	0%
<b>Total Elementary K to 5</b>	<b>2225</b>	<b>2193</b>	<b>2189</b>	<b>2163</b>	<b>2109</b>	<b>2086</b>	<b>2082</b>	<b>2028</b>	<b>1975</b>	<b>1971</b>	<b>1988</b>	<b>-237</b>	<b>-11%</b>	<b>17</b>	<b>1%</b>
<b>Percent Change Year to Year</b>		<b>-1%</b>	<b>0%</b>	<b>-1%</b>	<b>-2%</b>	<b>-1%</b>	<b>0%</b>	<b>-3%</b>	<b>-3%</b>	<b>0%</b>	<b>1%</b>				



### Elementary Enrollment by Grade 11 Year History

Grade	2003-2004	2004-2005	2005-2006	2006-2007	2007-2008	2008-2009	2009-2010	2010-2011	2011-2012	2012-2013	2013-2014	11 YR Change	11 Yr Chg %	1 YR Change	1 YR Chg %	Cohorts for 2013-2014
<b>K</b>	323	336	332	343	300	314	311	304	284	320	290	-33	-10%	-30	-9%	
<b>1</b>	363	342	387	366	380	335	351	336	339	341	345	-18	-5%	4	1%	25
<b>2</b>	374	361	362	378	355	380	328	357	340	320	332	-42	-11%	12	4%	-9
<b>3</b>	368	373	357	352	377	339	380	324	332	342	320	-48	-13%	-22	-6%	0
<b>4</b>	417	375	378	356	338	375	335	361	316	341	353	-64	-15%	12	4%	11
<b>5</b>	381	406	374	368	359	342	377	346	364	307	348	-33	-9%	41	13%	7
<b>Total</b>	2226	2193	2190	2163	2109	2085	2082	2028	1975	1971	1988	-238	-11%	17	1%	34



**Elementary Enrollments by School, Grade and Class  
September 2013**

<b>School</b>	<b>K</b>	<b>1</b>	<b>2</b>	<b>3</b>	<b>4</b>	<b>5</b>	<b>Total</b>	<b>Pre K</b>
Abbot-Downing	16	18	17	20	23	21		
Abbot-Downing	18	18	18	21	22	21		
Abbot-Downing	20	19	19	20	22	21		
Abbot-Downing		19	17	21		21		
<b>Total ADS</b>	<b>54</b>	<b>74</b>	<b>71</b>	<b>82</b>	<b>67</b>	<b>84</b>	<b>432</b>	
Beaver Meadow	18	17	18	17	25	20		13
Beaver Meadow	18	18	17	19	22	20		12
Beaver Meadow	19	17	16	19	23	20		
Beaver Meadow		16						
<b>Total BMS</b>	<b>55</b>	<b>68</b>	<b>51</b>	<b>55</b>	<b>70</b>	<b>60</b>	<b>359</b>	<b>25</b>
Broken Ground				20	22	25		
Broken Ground				21	23	24		
Broken Ground				19	22	23		
Broken Ground				20	23	24		
Broken Ground				21	20	25		
Broken Ground				19	22			
<b>Total BGS</b>				<b>120</b>	<b>132</b>	<b>121</b>	<b>373</b>	
Christa McAuliffe	20	18	21	20	20	21		
Christa McAuliffe	19	18	20	22	21	21		
Christa McAuliffe	20	14	23	21	22	20		
Christa McAuliffe		16			21	21		
<b>Total CMS</b>	<b>59</b>	<b>66</b>	<b>64</b>	<b>63</b>	<b>84</b>	<b>83</b>	<b>419</b>	
Mill Brook	18	20	21					10
Mill Brook	16	19	22					14
Mill Brook	16	19	20					13
Mill Brook	16	20	20					7
Mill Brook	19	20	22					
Mill Brook	18	19	21					
Mill Brook	19	20	20					
<b>Total MB</b>	<b>122</b>	<b>137</b>	<b>146</b>				<b>405</b>	<b>44</b>
<b>Total</b>	<b>290</b>	<b>345</b>	<b>332</b>	<b>320</b>	<b>353</b>	<b>348</b>	<b>1988</b>	<b>69</b>

### Elementary Enrollments Class Size Information

<b>Beaver Meadow</b>	<b>K</b>	<b>1</b>	<b>2</b>	<b>3</b>	<b>4</b>	<b>5</b>	<b>Total</b>
2011-2012 students	51	62	70	52	65	61	361
2012-2013 students	64	51	59	72	55	62	363
2013-2014 students	55	68	51	55	70	60	359
2011-2012 sections	3	3	3	3	3	3	18
2012-2013 sections	4	3	3	3	3	3	19
2013-2014 sections	3	4	3	3	3	3	19
Student Teacher Ratio 11-12	17.0	20.7	23.3	17.3	21.7	20.3	20.1
Student Teacher Ratio 12-13	16.0	17.0	19.7	24.0	18.3	20.7	19.1
<b>Student Teacher Ratio 13-14</b>	<b>18.3</b>	<b>17.0</b>	<b>17.0</b>	<b>18.3</b>	<b>23.3</b>	<b>20.0</b>	<b>18.9</b>

<b>Broken Ground</b>	<b>K</b>	<b>1</b>	<b>2</b>	<b>3</b>	<b>4</b>	<b>5</b>	<b>Total</b>
2011-2012 students			38	122	111	136	407
2012-2013 students				126	123	105	354
2013-2014 students			0	120	132	121	373
2011-2012 sections			2	6	5	6	19
2012-2013 sections			0	6	6	5	17
2013-2014 sections				6	6	5	17
Student Teacher Ratio 11-12			19.0	20.3	22.2	22.7	21.4
Student Teacher Ratio 12-13				21.0	20.5	21.0	20.8
<b>Student Teacher Ratio 13-14</b>				<b>20.0</b>	<b>22.0</b>	<b>24.2</b>	<b>21.9</b>

<b>Conant Rumford/Abbot-Downing</b>	<b>K</b>	<b>1</b>	<b>2</b>	<b>3</b>	<b>4</b>	<b>5</b>	<b>Total</b>
2011-2012 students	57	82	59	85	71	88	442
2012-2013 students	62	74	73	63	83	69	424
2013-2014 students	54	74	71	82	67	84	432
2011-2012 sections	4	4	3	4	3	4	22
2012-2013 sections	4	4	4	3	4	3	22
2013-2014 sections	3	4	4	4	3	4	22
Student Teacher Ratio 11-12	14.3	20.5	19.7	21.3	23.7	22.0	20.1
Student Teacher Ratio 12-13	15.5	18.5	18.3	21.0	20.8	23.0	19.3
<b>Student Teacher Ratio 13-14</b>	<b>18.0</b>	<b>18.5</b>	<b>17.8</b>	<b>20.5</b>	<b>22.3</b>	<b>21.0</b>	<b>19.6</b>

## Elementary Enrollments Class Size Information

<b>Dame Eastman/Mill Brook</b>	K	1	2	3	4	5	Total
2011-2012 students	125	121	95				341
2012-2013 students	133	149	123				405
2013-2014 students	122	137	146				405
2011-2012 sections	7	6	5				18
2012-2013 sections	7	7	6				20
2013-2014 sections	7	7	7				21
Student Teacher Ratio 11-12	17.9	20.2	19.0				18.9
Student Teacher Ratio 12-13	19.0	21.3	20.5				20.3
<b>Student Teacher Ratio 13-14</b>	<b>17.4</b>	<b>19.6</b>	<b>20.9</b>				<b>19.3</b>

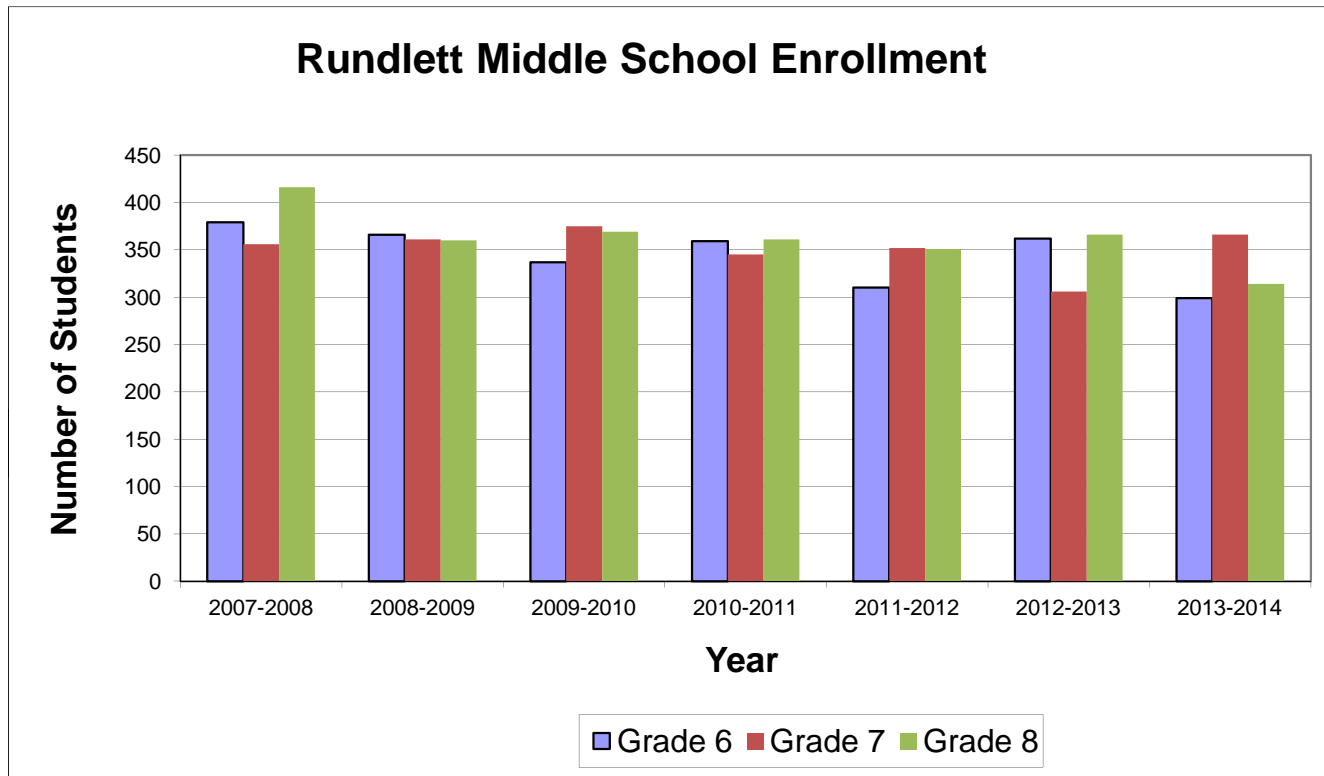
<b>Kimball Walker/Christa McAuliffe</b>	K	K	K	3	4	5	Total
2011-2012 students	51	74	78	73	69	79	424
2012-2013 students	61	67	65	81	80	71	425
2013-2014	59	66	64	63	84	83	419
2011-2012 sections	3	4	4	4	3	4	22
2012-2013 sections	3	4	3	4	4	3	21
2013-2014 sections	3	4	3	3	4	4	21
Student Teacher Ratio 11-12	17.0	18.5	19.5	18.3	23.0	19.8	19.3
Student Teacher Ratio 12-13	20.3	16.8	21.7	20.3	20.0	23.7	20.2
<b>Student Teacher Ratio 13-14</b>	<b>19.7</b>	<b>16.5</b>	<b>21.3</b>	<b>21.0</b>	<b>21.0</b>	<b>20.8</b>	<b>20.0</b>

<b>All Schools</b>							
2011-2012 students	284	339	340	332	316	364	1975
2012-2013 students	320	341	320	342	341	307	1971
2013-2014 students	290	345	332	320	353	348	1988
2011-2012 sections	17	17	17	17	14	17	101
2012-2013 sections	18	18	16	16	17	14	100
2013-2014 sections	16	19	17	16	16	16	100
Student teacher ratio 11-12	16.7	19.9	20.0	19.5	22.6	21.4	19.6
Student teacher ratio 12-13	17.8	18.9	20.0	21.4	20.1	21.9	19.7
Student teacher ratio 13-14	18.1	18.2	19.5	20.0	22.1	21.8	19.9

### Rundlett Middle School Enrollment History by Grade

Grade	2007-2008	2008-2009	2009-2010	2010-2011	2011-2012	2012-2013	2013-2014	7 year change	7 yr chg %	1 year change	1 yr chg %	Cohort
6	379	366	337	359	310	362	299	-80	-21%	-63	-17%	
7	356	361	375	345	352	306	366	10	3%	60	20%	4
8	416	360	369	361	351	366	314	-102	-25%	-52	-14%	8
Total	1151	1087	1081	1065	1013	1034	979	-172	-15%	-55	-5%	12
		-6%	-1%	-1%	-5%	2%	-5%	-15%				



### Rundlett Middle School Department Enrollments Fall 2013

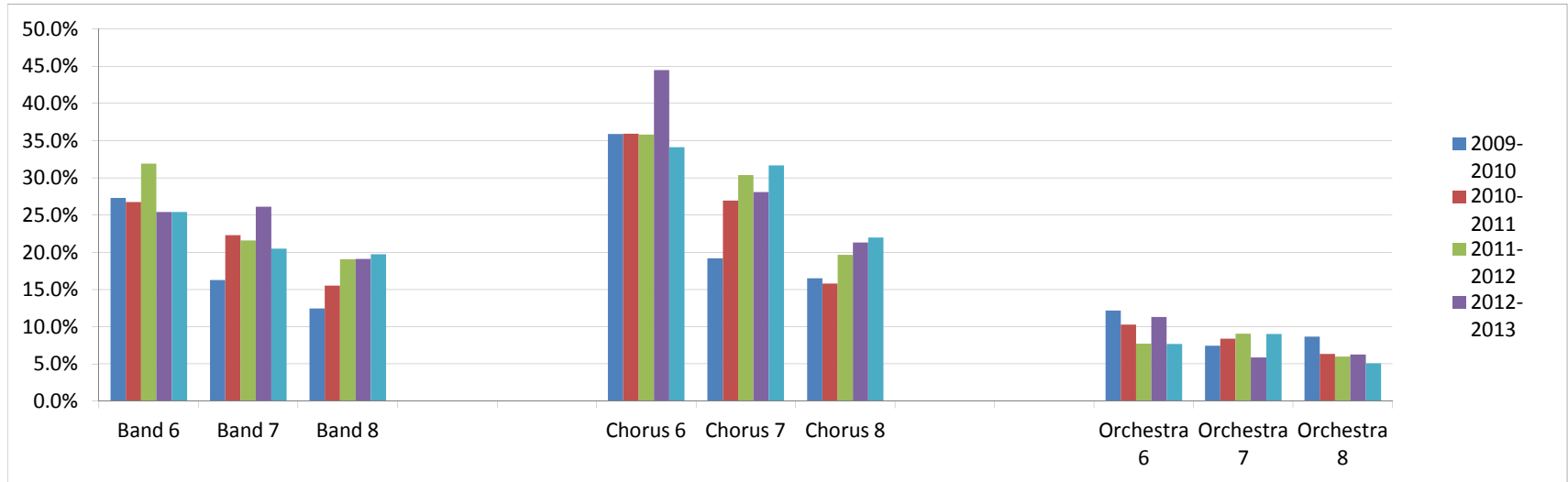
<b>Department</b>	Teachers	Enrollment in classes	No. Sections	Average Class Size
Art	3.0	336	18	18.6
Language Arts 6	3.5	291	14	20.8
Language Arts 7/8	6.0	661	29	22.8
Language Arts/Literacy 7 Lab	1.0	148	7	21.1
Tech Ed	2.3	314	13	24.1
Math 6	3.5	292	14	20.9
Math 7/8	6.0	660	29	22.8
Math 7 Lab	1.0	149	7	21.3
Music General	1.2	140	7	20.0
Music Performing Groups	2.4	447	14	31.9
Science 6	3.5	317	14	22.6
Science 7/8	6.0	675	29	23.3
Social Studies 6	3.5	300	14	21.4
Social Studies 7/8	6.0	676	29	23.3
Wellness	5.0	602	30	20.4
GR 8 World Language				
French 8	0.2	28	1	28.0
German 8	0.6	80	3	26.7
Latin 8	0.4	43	2	21.5
Spanish 8	0.8	114	4	28.5
GR 7 World Language	0.4	76	4	19.0
ELL teachers	1.5			
Library Media	1.0			
Reading specialist	1.0			
Math specialist	0.7			
Tech Integration	1.0			
<b>Total</b>	<b>61.5</b>			
<b>no perfgrps, read, math, tech, med</b>	<b>53.9</b>	<b>5901</b>	<b>268</b>	<b>22.1</b>



**Rundlett Middle School Performing Group Enrollments  
4 Year History**

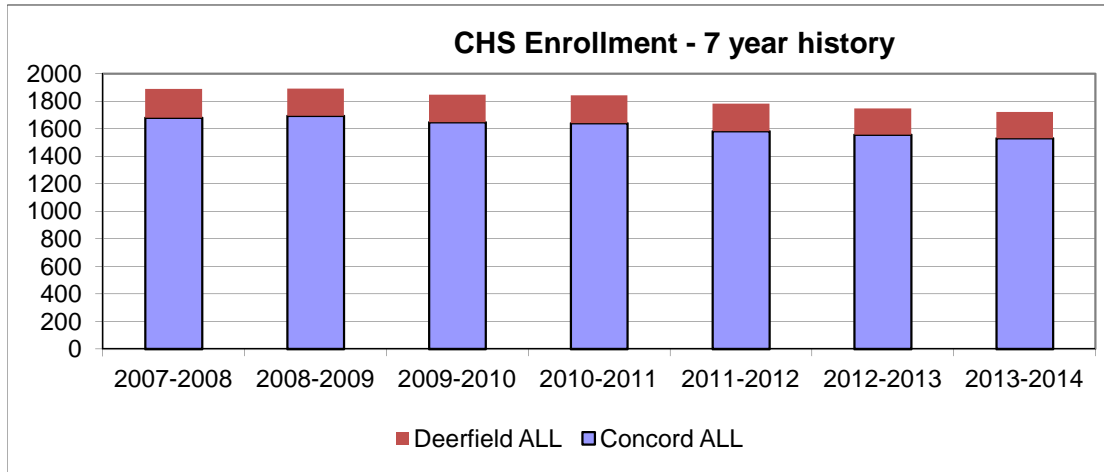
Performing Groups	2009-2010	% Students	2010-2011	% Students	2011-2012	% Students	2012-2013	% Students	2013-2014	% Students
Band 6	92	27.3%	96	27%	99	32%	92	25%	76	25%
Band 7	61	16%	77	22%	76	22%	80	26%	75	20%
Band 8	46	12%	56	16%	67	19%	70	19%	62	20%
<b>Total</b>	<b>199</b>	<b>18%</b>	<b>229</b>	<b>21%</b>	<b>242</b>	<b>24%</b>	<b>242</b>	<b>23%</b>	<b>213</b>	<b>22%</b>
Chorus 6	121	36%	129	36%	111	36%	161	44%	102	34%
Chorus 7	72	19%	93	27%	107	30%	86	28%	116	32%
Chorus 8	61	17%	57	16%	69	20%	78	21%	69	22%
<b>Total</b>	<b>254</b>	<b>23%</b>	<b>279</b>	<b>26%</b>	<b>287</b>	<b>28%</b>	<b>325</b>	<b>31%</b>	<b>287</b>	<b>29%</b>
Orchestra 6	41	12%	37	10%	24	8%	41	11%	23	8%
Orchestra 7	28	7%	29	8%	32	9%	18	6%	33	9%
Orchestra 8	32	9%	23	6%	21	6%	23	6%	16	5%
<b>Total</b>	<b>101</b>	<b>9%</b>	<b>89</b>	<b>8%</b>	<b>77</b>	<b>8%</b>	<b>82</b>	<b>8%</b>	<b>72</b>	<b>7%</b>
<b>Total All Groups</b>	<b>554</b>	<b>51%</b>	<b>597</b>	<b>56%</b>	<b>606</b>	<b>60%</b>	<b>649</b>	<b>63%</b>	<b>572</b>	<b>58%</b>

Note: There will be 29 more Band 7 students, 27 more Chorus 7 students, and 2 more orchestra 7 students during semester 2.



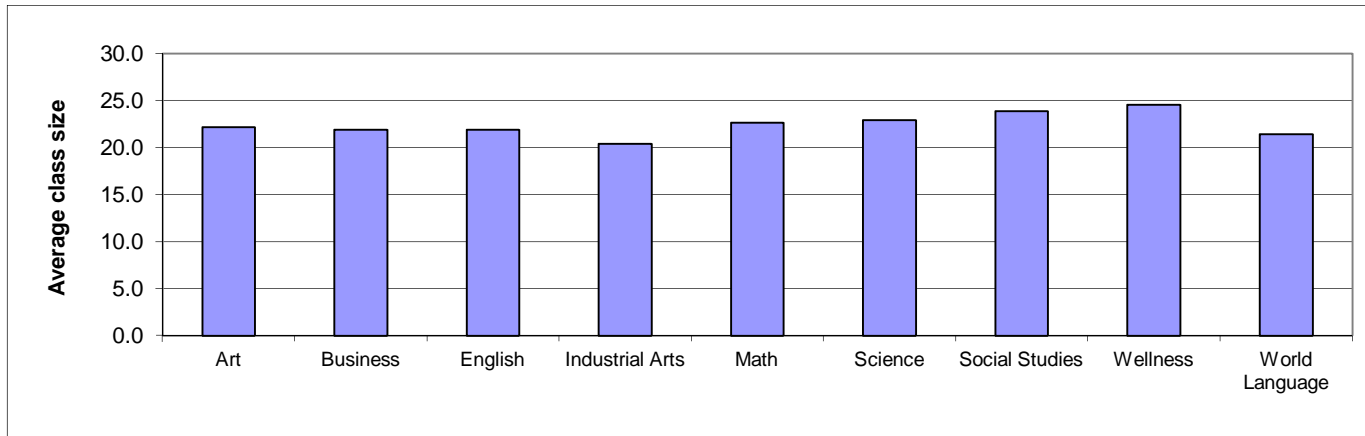
### Concord High School Enrollments 7 Year Comparison

Grade	2007-2008	2008-2009	2009-2010	2010-2011	2011-2012	2012-2013	2013-2014	6 yr change	6 yr % change	1 yr change	1 yr % change	Cohort change
Concord	433	429	445	475	417	416	425	-8	-2%	9	2%	
Deerfield	69	57	58	60	52	52	45	-24	-35%	-7	-13%	
<b>Grade 9</b>	<b>502</b>	<b>486</b>	<b>503</b>	<b>535</b>	<b>469</b>	<b>468</b>	<b>470</b>	<b>-32</b>	<b>-6%</b>	<b>2</b>	<b>0%</b>	
Concord	403	411	358	396	417	395	386	-17	-4%	-9	-2%	-30
Deerfield	46	61	52	45	58	48	45	-1	-2%	-3	-6%	-7
<b>Grade 10</b>	<b>449</b>	<b>472</b>	<b>410</b>	<b>441</b>	<b>475</b>	<b>443</b>	<b>431</b>	<b>-18</b>	<b>-4%</b>	<b>-12</b>	<b>-3%</b>	<b>-37</b>
Concord	418	398	418	384	350	369	349	-69	-17%	-20	-5%	-46
Deerfield	59	34	57	47	42	52	41	-18	-31%	-11	-21%	-7
<b>Grade 11</b>	<b>477</b>	<b>432</b>	<b>475</b>	<b>431</b>	<b>392</b>	<b>421</b>	<b>390</b>	<b>-87</b>	<b>-18%</b>	<b>-31</b>	<b>-7%</b>	<b>-53</b>
Concord	427	456	428	385	399	377	372	-55	-13%	-5	-1%	3
Deerfield	36	46	33	52	48	40	59	23	64%	19	48%	7
<b>Grade 12</b>	<b>463</b>	<b>502</b>	<b>461</b>	<b>437</b>	<b>447</b>	<b>417</b>	<b>431</b>	<b>-32</b>	<b>-7%</b>	<b>14</b>	<b>3%</b>	<b>10</b>
Concord ALL	1681	1694	1649	1640	1583	1557	1532	-149	-9%	-25	-2%	-73
Deerfield ALL	210	198	200	204	200	192	190	-20	-10%	-2	-1%	-7
<b>CHS Total</b>	<b>1891</b>	<b>1892</b>	<b>1849</b>	<b>1844</b>	<b>1783</b>	<b>1749</b>	<b>1722</b>	<b>-169</b>	<b>-9%</b>	<b>-27</b>	<b>-2%</b>	<b>-80</b>
Change		0.1%	-2.3%	-0.3%	-3.3%	-1.9%	-1.5%					



**Concord High School Class Size Information for Fall 2013-2014**

<b>Department</b>	<b>Teachers</b>	<b>Student Enrollment in Semester I classes</b>	<b>Average Teacher Load</b>	<b>No. Sections</b>	<b>Average Class Size</b>
Art	3.8	421	111	19	22.2
Business	2.4	303	126	12	25.3
English	14.9	1641	110	75	21.9
Industrial Arts	1.0	102	102	5	20.4
Math	13.6	1519	112	67	22.7
Music	2.2	425	193	11	38.6
Reading	1.8	53	29	9	5.9
Science	16.2	1854	114	81	22.9
Social Studies	13.6	1623	119	68	23.9
Wellness	7.6	933	123	38	24.6
World Language	8.8	944	107	44	21.5
ELL teachers	2.0				
Media Specialist	1.0				
Literacy Coach	0.2				
Curriculum Facilitator	1.8				
<b>Total Staff</b>	<b>90.9</b>				
Staff - ELL, media, literacy	85.9	9818	1247	429	22.9



**Concord High School Class Size Information for Fall 2013-2014**

**High School Enrollment History 8 Year Comparison  
Classes <15 and >30**

Department	Oct. '06	%	Oct. '07	%	Oct. '08	%	Oct. '09	%	Oct. '10	%	Oct. '11	%	Oct. '12	%	13-Oct	%
Art	550	28%	533	28%	554	29%	465	25%	473	26%	424	24%	411	23%	421	24%
Business	231	12%	300	16%	228	12%	232	13%	235	13%	241	14%	298	17%	303	18%
English	2031	>100%	1936	>100	1874	99%	1784	96%	1812	98%	1717	97%	1646	94%	1641	95%
Industrial Arts	145	8%	166	9%	91	5%	99	5%	92	5%	104	6%	104	6%	102	6%
Mathematics	1813	94%	1677	89%	1703	90%	1662	90%	1711	93%	1615	91%	1539	88%	1519	88%
Music	443	23%	383	20%	350	19%	365	20%	311	17%	293	17%	382	22%	425	25%
Reading	97	5%	77	4%	58	3%	66	4%	54	3%	51	3%	47	3%	53	3%
Science	1782	93%	1671	88%	1704	90%	1673	90%	1805	98%	1777	>100%	1905	109%	1854	108%
Social Studies	1653	85%	1554	82%	1656	88%	1791	97%	1704	92%	1658	94%	1672	96%	1623	94%
Wellness	1699	88%	1482	78%	1589	84%	1470	80%	1471	80%	1281	72%	1024	59%	933	54%
World Languages	1118	58%	1038	55%	1079	57%	1006	54%	1042	57%	1022	58%	1004	57%	944	55%
Enrollment:	1909		1944		1892		1849		1844		1783		1749		1722	

**Class Size Report for Fall 2013**

**Sections with Enrollment of fewer than 15**

Advanced Geometry	13
Advanced Self Defense	13
AP European	14
AP Lit and Comp	12
Classics in Translation	10
Calculus	12, 14
Discovering Algebra 2	11,10
Geometry	13
PE Class/PE Fundamentals	12,12

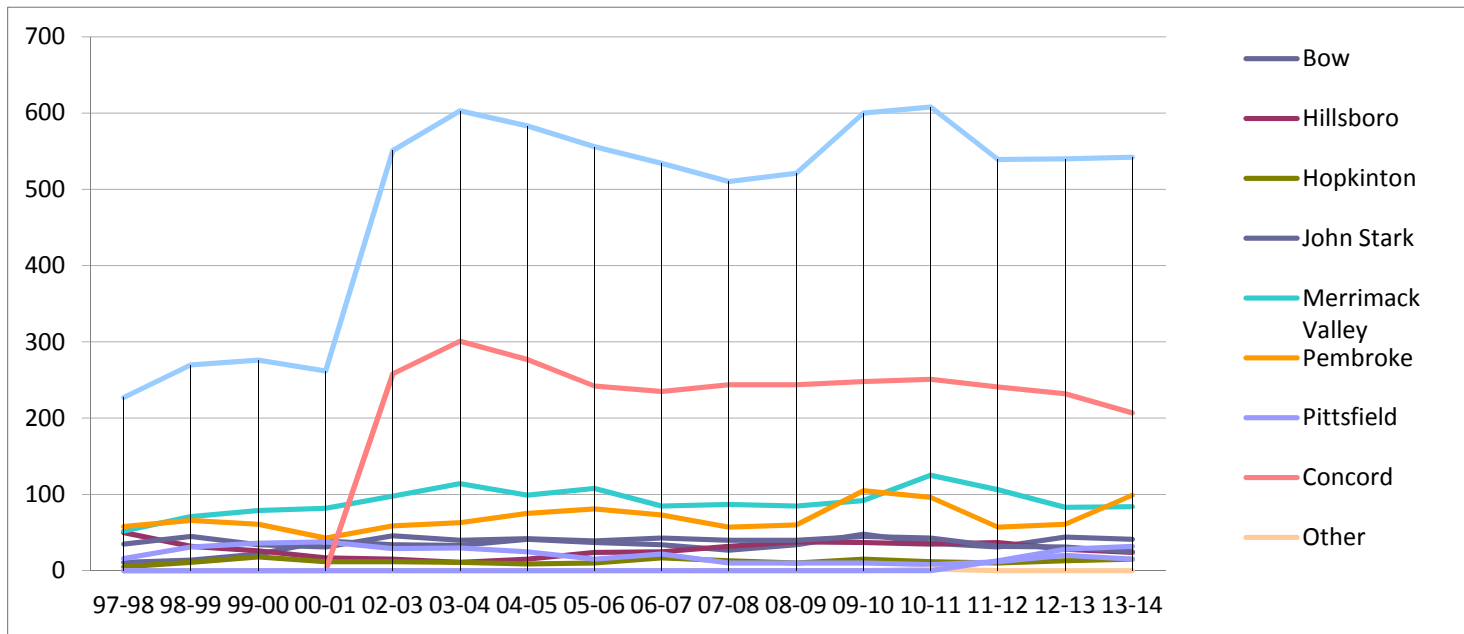
**Sections with Enrollment of 30 or over**

None

**CRTC Enrollments – 4 Year History**

Program	Period	Teacher	2010-2011			2011-2012			2012-2013			2013-2014		
			CHS	Sending	Total	CHS	Sending	Total	CHS	Sending	Total	CHS	Sending	Total
Auto Tech I	1 & 2	Mayotte	1	22	23	7	13	20			20	4	16	20
Auto Tech I	5 & 6	Mayotte	9	9	18	4	16	20		19		4	16	20
Auto Tech I	1 & 2	Bill	11	8	19	8	12	20	22	36	19	9	10	19
Auto Tech II	3 & 4	Mayotte	4	16	20	6	11	17			23	4	15	19
Auto Tech II	3 & 4	Bill	7	11	18	8	12	20	14	29	20	9	11	20
<b>Total</b>			<b>32</b>	<b>66</b>	<b>98</b>	<b>33</b>	<b>64</b>	<b>97</b>	<b>36</b>	<b>65</b>	<b>101</b>	<b>30</b>	<b>68</b>	<b>98</b>
Construction Tech I	1 & 2	Hubbard	16	5	21	8	14	22			22	12	7	19
Construction Tech I/II	5 & 6	Hubbard	2	19	21	6	11	17	22	23	23	4	13	17
Construction Tech II	3 & 4	Hubbard	7	16	23	7	13	20	6	14	20	10	11	21
<b>Total</b>			<b>25</b>	<b>40</b>	<b>65</b>	<b>21</b>	<b>38</b>	<b>59</b>	<b>28</b>	<b>37</b>	<b>65</b>	<b>26</b>	<b>31</b>	<b>57</b>
Cosmetology I	1 & 2	Hannon	11	12	23	10	13	23			18	9	10	19
Cosmetology I	5 & 6	Hannon	10	13	23	10	10	20	14	23	19	5	15	20
Cosmetology II	3 & 4	Hannon	8	12	20	10	13	23	8	10	18	4	13	17
<b>Total</b>			<b>29</b>	<b>37</b>	<b>66</b>	<b>30</b>	<b>36</b>	<b>66</b>	<b>22</b>	<b>33</b>	<b>55</b>	<b>18</b>	<b>38</b>	<b>56</b>
Criminal Justice I	1 & 2		11	11	22									
Criminal Justice I	5 & 6		7	13	20	13	8	21			24	9	12	21
Criminal Justice II	3 & 4		13	10	23	7	17	24	23	21	20	10	11	21
<b>Total</b>			<b>31</b>	<b>34</b>	<b>65</b>	<b>20</b>	<b>25</b>	<b>45</b>	<b>23</b>	<b>21</b>	<b>44</b>	<b>19</b>	<b>23</b>	<b>42</b>
Culinary Arts I	1 & 2	McIntosh	10	11	21	13	10	23			19	8	10	18
Culinary Arts I	5 & 6	McIntosh	6	16	22	8	13	21	17	22	20	4	15	19
Culinary Arts II	3 & 4	McIntosh	6	14	20	12	11	23	11	10	21	10	8	18
<b>Total</b>			<b>22</b>	<b>41</b>	<b>63</b>	<b>33</b>	<b>34</b>	<b>67</b>	<b>28</b>	<b>32</b>	<b>60</b>	<b>22</b>	<b>33</b>	<b>55</b>
Exploring Teaching I	1 & 2	Flanders	8	17	25	12	7	19			13	8	10	18
Exploring Teaching I	5 & 6	Flanders	13	14	27	5	11	16	7	20	14	3	15	18
Exploring Teaching II	3 & 4	Flanders	13	15	28	10	13	23	12	11	23	6	14	20
<b>Total</b>			<b>34</b>	<b>46</b>	<b>80</b>	<b>27</b>	<b>31</b>	<b>58</b>	<b>19</b>	<b>31</b>	<b>50</b>	<b>17</b>	<b>39</b>	<b>56</b>
Graphic Arts I	1 & 2	Mungovan				8	13	21			23	6	13	19
Graphic Arts I	5 & 6	Mungovan	14	9	23	7	12	19	25	18	20	11	12	23
Graphic Arts II	3 & 4	Mungovan	11	9	20	15	5	20	10	15	25	13	8	21
<b>Total</b>			<b>25</b>	<b>18</b>	<b>43</b>	<b>30</b>	<b>30</b>	<b>60</b>	<b>35</b>	<b>33</b>	<b>68</b>	<b>30</b>	<b>33</b>	<b>63</b>
Health Science & Technology I	1 & 2	Bean	11	12	23	13	11	24			25	13	13	26
Health Science & Technology I	5 & 6	Bean	5	15	20	12	10	22	22	26	23	7	15	22
Health Science & Technology II	3 & 4	Bean	11	17	28	11	12	23	13	13	26	15	14	29
<b>Total</b>			<b>27</b>	<b>44</b>	<b>71</b>	<b>36</b>	<b>33</b>	<b>69</b>	<b>35</b>	<b>39</b>	<b>74</b>	<b>35</b>	<b>42</b>	<b>77</b>
Information Technology I	1 & 2		13	9	22									
Information Technology I	5 & 6		6	12	18				6	17	23	8	15	23
Information Technology II	3 & 4	Messineo	7	10	17	11	7	18						
<b>Total</b>			<b>26</b>	<b>31</b>	<b>57</b>	<b>11</b>	<b>7</b>	<b>18</b>	<b>6</b>	<b>17</b>	<b>23</b>	<b>8</b>	<b>15</b>	<b>23</b>
Fire Science		TBA										2	13	15
<b>Totals</b>			<b>251</b>	<b>357</b>	<b>608</b>	<b>241</b>	<b>298</b>	<b>539</b>	<b>232</b>	<b>308</b>	<b>540</b>	<b>207</b>	<b>335</b>	<b>542</b>
Change												-25	27	2

School	03-04	04-05	05-06	06-07	07-08	08-09	09-10	10-11	11-12	12-13	13-14	11 yr Change	% Change
Bow	33	41	37	34	27	34	48	36	31	44	41	8	24%
Hillsboro	11	15	24	25	32	38	37	35	37	28	24	13	87%
Hopkinton	11	9	10	17	13	10	15	12	10	13	15	4	33%
John Stark	40	42	39	43	40	40	45	43	32	31	25	-15	-33%
Merrimack Valley	114	99	108	85	87	85	92	125	106	83	84	-30	-31%
Pembroke	63	75	81	73	57	60	105	96	57	61	99	36	61%
Pittsfield	30	25	15	22	10	10	10	8	12	20	15	-15	-52%
Concord	301	277	242	235	244	244	248	251	241	232	207	-94	-36%
Other								2	0	0	0	0	
Kearsarge									13	28	32	19	146%
<b>Total:</b>	603	583	556	534	510	521	600	608	539	540	542	-61	-11%



**Special Education Enrollments  
4 Year Comparison**

	2010-2011	% of Sped	% of school enrollment	2011-2012	% of all Sped	% of school enrollment	2012-2013	% of all Sped	% of school enrollment	2013-2014	% of all Sped	% of school enrollment
<b>Special Education</b>												
Beaver Meadow	38	17%	10%	58	24%	16%	57	23%	16%	48	18%	13%
Broken Ground	46	21%	13%	43	17%	11%	43	17%	12%	51	19%	14%
Conant Rumford/Abbot-Downing	64	29%	14%	58	24%	13%	59	24%	14%	57	22%	13%
Dame Eastman/Mill Brook	29	13%	8%	44	18%	13%	46	19%	11%	46	17%	11%
Kimball Walker/Christa McAuliffe	42	19%	9%	43	17%	10%	38	15%	9%	57	22%	14%
Elementary 3R							4	2%		6	2%	
Elementary Subtotal	219	100%	11%	246	100%	12%	247	100%	13%	265	100%	13%
Rundlett 6	47	31%	13%	38	26%	12%	63	38%	17%	41	28%	14%
Rundlett 7	51	34%	15%	51	35%	14%	50	30%	16%	64	43%	17%
Rundlett 8	53	35%	15%	55	38%	16%	52	32%	14%	44	30%	14%
Rundlett Subtotal	151	100%	14%	144	100%	14%	165	100%	16%	149	100%	15%
CHS 9							80	25%	17%	72	24%	15%
CHS 10							84	27%	19%	70	24%	16%
CHS 11							59	19%	14%	72	24%	18%
CHS 12							92	29%	21%	81	27%	19%
CHS Subtotal	368	20%		350	20%		315	100%	18%	295	100%	17%
Preschool	68			65			66			73		
District Total without preschool	806	16%		805	17%		793	17%		782	17%	
<b>3 R Program</b>												
	<b>2010-2011</b>			<b>2011-2012</b>			<b>2012-2013</b>			<b>2013-2014</b>		
Elementary				4			4			6		
Middle				13			10			11		
Advance				18			12			40		



**Special Education Enrollments  
4 Year Comparison**

	2010-2011		2011-2012		2012-2013		2013-2014	
<b>Strong Foundation Charter</b>								
Elementary			47	2%	41	2%	40	2%
Rundlett			35	3%	46	4%	41	4%
Total			82		87		81	

	2012-2013		2013-2104	
<b>Diploma Academy</b>				
DA TAP Eng/Civics and Bike Shop2012/Career Pathways2013		16		3
DA TAP Community Cycles 2013				12
DA English 9/10 (Core)		16		12
DA English 11/12 (Core)		14		6
DA School Day English2012/Independent Programs 2013		2		8
School Day Plato/VLACS		50		48
Afterschool Plato/VLACS		3		7
GED Options Program		10		6
Adult Mentor Bridges 2012/Adult Mentor Grad Coach 2013		6		8
Credit Recovery: US History 2012/DA Chemistry 2013		1		14
DA TAP Construction/Integrated Arts/Math		2		7
CTE Discovery Labs		0		22
Total		120		153

	2010-2011			2011-2012			2012-2013			2013-2014		
<b>English Language Learners</b>	% of ELL	% school	% of ELL	% school	% of ELL	% school	% of ELL	% school	% of ELL	% school		
Beaver Meadow	11	8%	3%	9	7%	2%	8	6%	2%	10	8%	3%
Broken Ground	49	37%	14%	40	30%	10%	55	42%	16%	43	33%	12%
Conant Rumford/Abbot-Downing	21	16%	4%	20	15%	5%	16	12%	4%	19	14%	4%
Dame Eastman/Mill Brook	35	27%	9%	43	34%	13%	42	29%	10%	43	32%	11%
Kimball Walker/Christa McAuliffe	16	12%	4%	14	11%	3%	23	16%	5%	19	14%	5%
Elementary other												
Elementary Subtotal	132		7%	126		6%	144		7%	134		7%
Rundlett Middle School	58		5%	59		6%	50		5%	51		5%
CHS	93		5%	127		7%	121		7%	111		6%
Total	283		6%	312		7%	315		7%	296		6%

**Special Education Enrollments  
4 Year Comparison**

	<b>2010-2011</b> % of enrollment		<b>2011-2012</b> % of enrollment		<b>2012-2013</b> % of enrollment		<b>2013-2014</b> % of enrollment	
<b>Homeschool</b>								
Elementary	33	2%	46	2%			53	3%
Middle	34	3%	30	3%	27		30	3%
High School	22	1%	21	1%			41	2%
<b>Total</b>	<b>89</b>	<b>2%</b>	<b>97</b>	<b>2%</b>			<b>124</b>	<b>3%</b>

**Summary of Reasons for Transfer Into Concord School District as of September 13, 2013**

School	Grade	From another NH Community	From another state	From another country	From Private School	From Charter School	From Home Schooling	Unknown	Total	School Totals
BMS	1	5	0	0	5	0	0	0	10	
BMS	2	2	0	0	1	0	0	0	3	
BMS	3	2	1	0	0	0	0	0	3	
BMS	4	1	2	0	0	0	0	0	3	
BMS	5	3	2	0	2	0	0	0	7	26
<b>Total</b>		13	5	0	8	0	0	0	26	
BGS	2	0	0	0	0	0	0	0	0	
BGS	3	5	2	2	2	1	0	0	12	
BGS	4	5	3	3	0	2	1	0	14	
BGS	5	4	1	0	1	0	0	0	6	32
<b>Total</b>		14	6	5	3	3	1	0	32	
ADS	1	5	0	0	7	0	0	0	12	
ADS	2	3	0	0	2	0	0	0	5	
ADS	3	1	0	0	1	1	0	0	3	
ADS	4	3	0	0	3	0	0	0	6	
ADS	5	2	0	0	0	2	0	0	4	30
<b>Total</b>		14	0	0	13	3	0	0	30	
MBS	1	1	0	0	0	0	0	0	1	
MBS	2	2	1	0	0	0	0	0	3	4
<b>Total</b>		3	1	0	0	0	0	0	4	
CMS	1	3	3	0	14	0	0	0	20	
CMS	2	5	1	0	0	0	0	0	6	
CMS	3	2	2	0	0	0	0	0	4	
CMS	4	3	2	0	1	0	0	0	6	
CMS	5	5	5	1	1	0	0	0	12	48
<b>Total</b>		18	13	1	16	0	0	0	48	
RMS	6	15	0	4	3	0	0	0	22	
RMS	7	6	3	0	1	0	0	0	10	
RMS	8	4	2	3	1	1	1	0	12	44
<b>Total</b>		25	5	7	5	1	1	0	44	
CHS	9	23	6	9	3	1	1	0	43	
CHS	10	13	3	0	4	0	0	0	20	
CHS	11	11	4	1	4	0	0	0	20	
CHS	12	9	3	3	3	0	0	0	18	101
<b>Total</b>		56	16	13	14	1	1	0	101	
<b>Totals</b>		143	46	26	59	8	3	0	285	285
<b>%</b>		<b>50.2%</b>	<b>16.1%</b>	<b>9.1%</b>	<b>20.7%</b>	<b>2.8%</b>	<b>1.1%</b>	<b>0.0%</b>	100.00%	200.0%
<b>2012-2013</b>		96	27	48	53	6	5	5	240	

**Summary of Reasons for Transfer Out of Concord School District as of September 13, 2013**

School	Grade	To another NH Community	To another state	To another country	To Private School	To Charter School	To Home Schooling	GED	Other	Total	School Totals
BMS	1	6	3	0	0	0	1	0	0	10	
BMS	2	2	1	0	0	0	0	0	0	3	
BMS	3	1	0	0	1	0	0	0	0	2	
BMS	4	2	1	0	0	0	0	0	0	3	
BMS	5	1	1	0	0	0	0	0	0	2	20
<b>Total</b>		12	6	0	1	0	1	0	0	20	
BGS	2	0	0	0	0	0	0	0	0	0	
BGS	3	7	2	1	0	1	0	0	0	11	
BGS	4	0	0	0	0	4	1	0	0	5	
BGS	5	4	2	0	0	2	1	0	0	9	25
<b>Total</b>		11	4	1	0	7	2	0	0	25	
ADS	1	7	1	0	0	0	0	0	0	8	
ADS	2	5	1	0	0	0	0	0	0	6	
ADS	3	2	1	0	2	0	0	0	0	5	
ADS	4	2	3	0	0	0	0	0	0	5	
ADS	5	2	2	0	0	0	0	1	0	5	29
<b>Total</b>		18	8	0	2	0	0	1	0	29	
MBS	1	6	1	2	2	0	0	0	0	11	
MBS	2	6	1	1	0	0	1	0	0	9	20
<b>Total</b>		12	2	3	2	0	1	0	0	20	
CMS	1	3	0	0	0	0	6	0	0	9	
CMS	2	5	0	0	0	0	0	0	0	5	
CMS	3	4	1	0	0	0	0	0	1	6	
CMS	4	1	1	0	0	1	0	0	0	3	
CMS	5	1	2	0	1	1	0	0	0	5	28
<b>Total</b>		14	4	0	1	2	6	0	1	28	
RMS	6	10	0	1	6	8	0	0	1	26	
RMS	7	10	4	0	1	1	1	0	0	17	
RMS	8	6	4	0	0	1	2	0	1	14	57
<b>Total</b>		26	8	1	7	10	3	0	2	57	
CHS	9	14	4	0	18	0	3	0	1	40	
CHS	10	9	3	2	6	0	2	2	1	25	
CHS	11	5	8	2	3	4	0	3	0	25	
CHS	12	4	4	1	1	6	0	1	0	17	107
<b>Total</b>		32	19	5	28	10	5	6	2	107	
<b>Totals</b>		125	51	10	41	29	18	7	5	286	286
<b>%</b>		43.71%	17.83%	3.50%	14.34%	10.14%	6.29%	2.45%	1.75%	100.00%	
<b>1213</b>		94	44	4	25	23	1	2	2	195	

**PreK to Elementary Staffing  
4 year history**

<b>Professional Staff</b>	<b>2010-2011</b>	<b>2011-2012</b>	<b>2012-2013</b>	<b>2013-2014</b>	<b>1 yr chg</b>
Principals	5.00	5.00	5.00	5.00	0.00
Assistant Principals	2.00	2.00	0.00	0.00	0.00
<b>Subtotal</b>	<b>7.00</b>	<b>7.00</b>	<b>5.00</b>	<b>5.00</b>	<b>0.00</b>
<b>Regular Education Teachers</b>	<b>2010-2011</b>	<b>2011-2012</b>	<b>2012-2013</b>	<b>2013-2014</b>	<b>1 yr chg</b>
Classroom Teachers	91.50	90.50	90.00	92.00	2.00
Reading Specialists	6.00	5.00	5.00	3.80	-1.20
Media Tech Teachers	0.00	0.00	4.00	4.00	0.00
Literacy teacher (Title I)	3.40	1.50	1.20	1.20	0.00
Elementary Math Specialist	1.00	1.00	1.00	1.00	0.00
Project SEE Coordinator	1.00	1.00	1.00	1.00	0.00
ELL Teachers/Coordinators	1.40	1.40	1.90	1.90	0.00
Family Literacy Coordinator	2.17	2.17	0.75	0.75	0.00
Art Teachers	4.00	4.00	4.50	4.50	0.00
Physical Ed Teachers	4.00	4.00	4.50	4.50	0.00
Music Teachers	6.00	5.00	5.00	5.00	0.00
<b>Subtotal</b>	<b>120.47</b>	<b>115.57</b>	<b>118.85</b>	<b>119.65</b>	<b>0.80</b>
<b>Special Education/Services</b>	<b>2010-2011</b>	<b>2011-2012</b>	<b>2012-2013</b>	<b>2013-2014</b>	<b>1 yr chg</b>
Special Ed Coordinators	4.00	4.00	4.00	3.50	-0.50
Guidance	5.00	5.00	5.00	5.00	0.00
Nurse	5.00	5.00	5.00	5.00	0.00
School Psychologist	2.10	2.10	2.00	2.00	0.00
LPN	1.27	1.27	1.47	1.40	-0.07
Autism Teacher	4.00	0.00	4.00	4.00	0.00
Special Ed LD Teachers	18.15	17.85	18.15	18.05	-0.10
Special Ed Speech Language Tchrs	8.10	8.40	8.30	8.40	0.10
3R Teacher	1.00	1.00	1.00	1.00	0.00
Occupational Therapist	3.20	3.10	3.10	3.10	0.00
COTA	2.71	1.00	1.00	1.00	0.00
<b>Subtotal Professional Staff</b>	<b>54.53</b>	<b>48.72</b>	<b>53.02</b>	<b>52.45</b>	<b>-0.57</b>

**PreK to Elementary Staffing  
4 year history**

<b>Teaching Assistant Staff</b>	<b>2010-2011</b>	<b>2011-2012</b>	<b>2012-2013</b>	<b>2013-2014</b>	<b>1 yr chg</b>
Special Ed Instructional Assistants	69.16	53.37	55.13	58.01	2.88
Autism Assistants	7.93	8.93	8.93	8.93	0.00
Student Support Assistants	5.72	5.72	4.65	4.65	0.00
Library Assistants	6.43	5.00	1.00	1.00	0.00
Tech Assistants	4.60	4.60	4.60	4.60	0.00
Project SEE Assistants	2.55	2.55	2.55	2.55	0.00
<b>Subtotal Teaching Assistant Staff</b>	<b>96.39</b>	<b>80.17</b>	<b>76.86</b>	<b>79.74</b>	<b>2.88</b>
<b>Tutor Staff</b>	<b>2010-2011</b>	<b>2011-2012</b>	<b>2012-2013</b>	<b>2013-2014</b>	<b>1 yr chg</b>
Reading Tutors	15.15	12.55	12.57	15.86	3.29
Math Tutors	1.72	3.15	3.15	4.62	1.47
ELL Tutors	5.74	5.64	5.94	5.93	-0.01
<b>Subtotal Tutor Staff</b>	<b>22.61</b>	<b>21.34</b>	<b>21.66</b>	<b>26.41</b>	<b>4.75</b>
<b>Administrative Assistant Staff</b>	<b>2010-2011</b>	<b>2011-2012</b>	<b>2012-2013</b>	<b>2013-2014</b>	<b>1 yr chg</b>
Admin Assistants	7.00	6.00	5.00	5.00	0.00
<b>Custodial Staff</b>	<b>2010-2011</b>	<b>2011-2012</b>	<b>2012-2013</b>	<b>2013-2014</b>	<b>1 yr chg</b>
Head Custodians	7.00	5.00	5.00	5.00	0.00
Custodians	10.00	8.75	10.00	10.00	0.00
<b>Subtotal Custodial Staff</b>	<b>17.00</b>	<b>13.75</b>	<b>15.00</b>	<b>15.00</b>	<b>0.00</b>
<b>Food Service Staff</b>	<b>2010-2011</b>	<b>2011-2012</b>	<b>2012-2013</b>	<b>2013-2014</b>	<b>1 yr chg</b>
Head Cook/Elementary Cook III	6.20	6.23	5.32	5.32	0.00
Food Service Assistants	3.83	2.49	2.43	2.87	0.44
<b>Subtotal Food Service Staff</b>	<b>10.03</b>	<b>8.72</b>	<b>7.75</b>	<b>8.19</b>	<b>0.44</b>
<b>Other</b>	<b>2010-2011</b>	<b>2011-2012</b>	<b>2012-2013</b>	<b>2013-2014</b>	<b>1 yr chg</b>
Elementary Sub Dispatcher	0.36	0.36	0.36	0.36	0.00
Elementary perm Subs	2.00	2.00	2.00	2.00	0.00
Title I Preschool	1.40	0.00	0.00	0.00	0.00
<b>Subtotal Other</b>	<b>3.76</b>	<b>2.36</b>	<b>2.36</b>	<b>2.36</b>	<b>0.00</b>
<b>Total All Staff (PreK to Grade 5)</b>	<b>338.79</b>	<b>303.63</b>	<b>305.50</b>	<b>313.80</b>	<b>8.30</b>

**Middle School Grades 6, 7 and 8 Staffing Summary  
4 Year History**

<b>Professional Staff</b>	<b>2010-2011</b>	<b>2011-2012</b>	<b>2012-2013</b>	<b>2013-2014</b>	<b>1 yr chg</b>
Principals	1.00	1.00	1.00	1.00	0.00
Assistant Principals	2.00	2.00	2.00	2.00	0.00
Director of Special Education	1.00	1.00	1.00	1.00	0.00
<b>Subtotal</b>	<b>4.00</b>	<b>4.00</b>	<b>4.00</b>	<b>4.00</b>	<b>0.00</b>

<b>Regular Education Teachers</b>	<b>2010-2011</b>	<b>2011-2012</b>	<b>2012-2013</b>	<b>2013-2014</b>	<b>1 yr chg</b>
Classroom Teachers (Core)	45.00	45.00	43.00	40.00	-3.00
Reading Specialists	1.00	1.00	1.00	1.00	0.00
Library Media Specialist	1.00	1.00	1.00	1.00	0.00
Tech Integration Teacher	0.00	0.00	0.00	1.00	1.00
Literacy coach (Title I)	0.00	0.00	0.00	0.00	0.00
Math coach	0.50	0.50	0.70	0.70	0.00
ELL Teachers	1.00	1.00	1.50	1.50	0.00
Art Teachers	2.50	2.50	2.50	3.00	0.50
Physical Ed/Health Teachers	6.00	5.50	5.00	5.00	0.00
Music Teachers	4.10	4.10	4.10	3.60	-0.50
Tech Ed Teachers	2.30	2.30	2.30	2.30	0.00
World Language Teachers	2.80	2.80	2.80	2.40	-0.40
<b>Subtotal Professional Staff</b>	<b>61.10</b>	<b>60.60</b>	<b>63.90</b>	<b>61.50</b>	<b>-2.40</b>

<b>Special Education/Services</b>	<b>2010-2011</b>	<b>2011-2012</b>	<b>2012-2013</b>	<b>2013-2014</b>	<b>1 yr. chg</b>
Special Ed Coordinators	0.00	0.00	0.00	0.00	0.00
Guidance	4.00	4.00	4.00	4.00	0.00
Nurse	1.50	1.50	1.50	1.50	0.00
School Psychologist	1.00	1.00	1.00	1.00	0.00
LPN	0.00	0.00	0.00	0.00	0.00
Autism Teacher	1.00	1.00	1.00	1.00	0.00
Special Ed Teachers LD and Inclusion	11.50	8.69	6.00	6.00	0.00
Special Ed Teachers, SLP and LBI	1.50	2.59	4.50	4.50	0.00
3R Teacher	1.00	1.00	1.00	1.00	0.00
Occupational Therapist	0.40	0.40	0.40	0.40	0.00
<b>Subtotal Special Services Staff</b>	<b>21.90</b>	<b>20.18</b>	<b>19.40</b>	<b>19.40</b>	<b>0.00</b>

**Middle School Grades 6, 7 and 8 Staffing Summary  
4 Year History**

<b>Teaching Assistant Staff</b>	<b>2010-2011</b>	<b>2011-2012</b>	<b>2012-2013</b>	<b>2013-2014</b>	<b>1 yr chg</b>
Special Ed Instructional Assistants	23.82	22.95	20.91	20.84	-0.07
Autism Assistants	4.00	4.00	4.00	4.00	0.00
Special Ed Program Assistants	2.93	2.91	2.91	2.84	-0.07
Library Assistants	1.79	1.79	1.79	1.79	0.00
Tech Assistants	0.00	0.00	0.00	0.00	0.00
Admin Program Assistant	0.93	0.93	0.93	0.93	0.00
Court Liaison	0.14	0.14	0.15	0.15	0.00
<b>Subtotal Teaching Assistant Staff</b>	<b>33.61</b>	<b>32.72</b>	<b>30.69</b>	<b>30.55</b>	<b>-0.14</b>
<b>Tutor Staff</b>	<b>2010-2011</b>	<b>2011-2012</b>	<b>2012-2013</b>	<b>2013-2014</b>	<b>1 yr chg</b>
Reading Tutors	4.58	2.58	2.58	2.58	0.00
Math Tutors	0.00	0.00	0.00	0.00	0.00
ELL Tutors	1.97	1.97	1.97	1.89	-0.08
<b>Subtotal Tutor Staff</b>	<b>6.55</b>	<b>4.55</b>	<b>4.55</b>	<b>4.47</b>	<b>-0.08</b>
<b>Administrative Assistant Staff</b>					
<b>Admin Assistants</b>	<b>5.07</b>	<b>5.07</b>	<b>5.07</b>	<b>5.07</b>	<b>0.00</b>
<b>Custodial Staff</b>	<b>2010-2011</b>	<b>2011-2012</b>	<b>2012-2013</b>	<b>2013-2014</b>	<b>1 yr chg</b>
Head Custodians	1.00	1.00	1.00	1.00	0.00
Custodians	7.50	6.00	6.00	6.00	0.00
<b>Subtotal Custodial Staff</b>	<b>8.50</b>	<b>7.00</b>	<b>7.00</b>	<b>7.00</b>	<b>0.00</b>
<b>Food Service Staff</b>	<b>2010-2011</b>	<b>2011-2012</b>	<b>2012-2013</b>	<b>2013-2014</b>	<b>1 yr chg</b>
Head Cook/Elementary Cook III	1.90	1.90	1.90	1.87	-0.03
Food Service Assistants	4.28	3.15	3.15	2.68	-0.47
<b>Subtotal Food Service Staff</b>	<b>6.18</b>	<b>5.05</b>	<b>5.05</b>	<b>4.55</b>	<b>-0.50</b>
<b>Other</b>	<b>2010-2011</b>	<b>2011-2012</b>	<b>2012-2013</b>	<b>2013-2014</b>	<b>1 yr chg</b>
Permanent Substitutes	4.00	4.00	4.00	4.00	0.00
<b>Subtotal Other</b>	<b>4.00</b>	<b>4.00</b>	<b>4.00</b>	<b>4.00</b>	<b>0.00</b>
<b>Total All Staff</b>	<b>150.91</b>	<b>143.17</b>	<b>143.66</b>	<b>140.54</b>	<b>-3.12</b>



**High School Staffing  
4 Year History**

<b>Professional Staff</b>	<b>2010-2011</b>	<b>2011-2012</b>	<b>2012-2013</b>	<b>2013-2014</b>	<b>1 yr chg</b>
Principals	1.00	1.00	1.00	1.00	0.00
Assistant Principals	4.00	4.00	4.00	4.00	0.00
<b>Subtotal</b>	<b>5.00</b>	<b>5.00</b>	5.00	5.00	<b>0.00</b>

<b>Regular Education Teachers</b>	<b>2010-2011</b>	<b>2011-2012</b>	<b>2012-2013</b>	<b>2013-2014</b>	<b>1 yr chg</b>
Classroom Teachers (Core)	58.90	58.90	58.70	58.50	-0.20
Reading Specialists	1.80	1.80	1.80	1.80	0.00
Media Tech Teachers/Library	2.00	1.00	1.00	1.00	0.00
Literacy Coach (Title I)	0.00	0.20	0.20	0.20	0.00
ELL Teachers	2.00	2.00	2.00	2.00	0.00
Art Teachers	4.00	3.40	3.60	3.80	0.20
Physical Ed/Health Teachers	8.65	7.60	7.60	7.60	0.00
Music Teachers	2.00	2.20	2.20	2.20	0.00
Tech Ed Teachers	1.00	1.00	1.00	1.00	0.00
World Language Teachers	9.00	9.80	9.20	8.80	-0.40
Business Teachers	2.00	2.00	2.00	2.00	0.00
Curriculum Facilitators	2.00	2.00	2.00	2.00	0.00
<b>Subtotal Regular Education</b>	<b>93.35</b>	<b>91.90</b>	<b>91.30</b>	<b>90.90</b>	<b>-0.40</b>

<b>CRTC Professional Staff</b>					
Program Teachers	10.34	9.00	8.67	8.67	0.00
Student Support Coordinator	1.00	0.00	0.00	0.00	0.00
<b>Subtotal CRTC Professional Staff</b>	<b>11.34</b>	<b>9.00</b>	<b>8.67</b>	<b>8.67</b>	<b>0.00</b>

<b>Special Education/Services Staff</b>					
Special Ed Coordinators	2.40	2.40	2.40	2.40	0.00
Guidance	8.00	7.00	7.00	7.00	0.00
Nurse	1.90	1.90	1.90	1.90	0.00
School Psychologist	0.90	0.90	1.00	1.00	0.00
Autism Teacher	1.00	1.00	1.00	1.00	0.00
Special Ed Teachers (LD + Access)	11.00	11.60	12.60	12.60	0.00
Speech Language Teachers	3.50	3.50	3.50	3.50	0.00
EH Teacher	2.00	2.00	2.00	2.00	0.00
Advance Teacher	1.00	1.00	1.00	1.00	0.00
Social Worker	0.00	0.00	1.00	1.00	0.00
Occupational Therapist	0.60	0.60	0.60	0.60	0.00
Counselor Therapists	1.13	1.13	1.13	1.13	0.00
Project Search Teacher	1.00	1.00	1.00	1.00	0.00
Diploma Academy/Adult HS Coord	1.00	1.00	1.00	1.00	0.00
<b>Subtotal Special Ed Svcs Staff</b>	<b>35.43</b>	<b>35.03</b>	<b>37.13</b>	<b>37.13</b>	<b>0.00</b>

**High School Staffing  
4 Year History**

<b>Teaching Assistant Staff</b>	<b>2010-2011</b>	<b>2011-2012</b>	<b>2012-2013</b>	<b>2013-2014</b>	<b>1 yr chg</b>
Special Ed Instructional Assistants	51.31	37.37	39.28	41.86	2.58
Autism Assistants	0.00	0.00	0.00	0.00	0.00
Special Ed Program Assistants	2.00	3.30	3.30	3.30	0.00
Library Assistants	1.79	1.79	1.79	1.79	0.00
Tech Assistants	0.00	0.00	0.00	0.00	0.00
Admin Program Assistant	3.07	3.07	3.07	3.07	0.00
Health Assistant	0.71	0.00	0.00	0.00	0.00
CRTC Assistants	4.75	4.38	5.22	4.42	-0.80
Court Liaison	0.72	0.72	0.71	0.71	0.00
Diploma Academy Assistants	1.00	1.00	0.43	0.16	-0.27
<b>Subtotal Teaching Assistant Staff</b>	<b>65.35</b>	<b>51.63</b>	<b>53.80</b>	<b>55.31</b>	<b>1.51</b>
<b>Tutor Staff</b>	<b>2010-2011</b>	<b>2011-2012</b>	<b>2012-2013</b>	<b>2013-2014</b>	<b>1 yr chg</b>
Reading Tutors	1.93	1.71	1.71	1.71	0.00
Math Tutors	0.93	0.86	0.86	0.85	-0.01
ELL Tutors	3.51	3.51	3.51	3.51	0.00
Special Ed tutors	3.50	1.79	1.86	1.86	0.00
<b>Subtotal Tutor Staff</b>	<b>9.87</b>	<b>7.87</b>	<b>7.94</b>	<b>7.93</b>	<b>-0.01</b>
<b>Administrative Assistant Staff</b>	<b>2010-2011</b>	<b>2011-2012</b>	<b>2012-2013</b>	<b>2013-2014</b>	<b>1 yr chg</b>
<b>Admin Assistants</b>	<b>12.67</b>	<b>12.67</b>	<b>12.60</b>	<b>12.60</b>	<b>0.00</b>
<b>Custodial Staff</b>	<b>2010-2011</b>	<b>2011-2012</b>	<b>2012-2013</b>	<b>2013-2014</b>	<b>1 yr chg</b>
Head Custodians	1.00	1.00	1.00	1.00	0.00
Custodians	13.25	11.75	12.75	12.75	0.00
<b>Subtotal Custodial Staff</b>	<b>14.25</b>	<b>12.75</b>	<b>13.75</b>	<b>13.75</b>	<b>0.00</b>
<b>Food Service Staff</b>	<b>2010-2011</b>	<b>2011-2012</b>	<b>2012-2013</b>	<b>2013-2014</b>	<b>1 yr chg</b>
Head Cook/Elementary Cook III	1.93	2.00	2.00	1.87	-0.13
Food Service Assistants	5.82	4.91	4.88	4.25	-0.63
<b>Subtotal Food Service Staff</b>	<b>7.75</b>	<b>6.91</b>	<b>6.88</b>	<b>6.12</b>	<b>-0.76</b>
<b>Other</b>	<b>2010-2011</b>	<b>2011-2012</b>	<b>2012-2013</b>	<b>2013-2014</b>	<b>1 yr chg</b>
Permanent Substitutes	3.00	3.00	3.00	3.00	0.00
Job Developer	0.60	0.60	0.60	0.60	0.00
Preschool Instructor			0.67	0.67	0.00
CRTC Coordinator Services	1.00	1.00	1.00	1.00	0.00
DA Assistant Coordinator	1.00	1.00	1.00	1.00	0.00
DA Teacher	0.00	0.10	0.10	0.00	-0.10
<b>Subtotal Other</b>	<b>5.60</b>	<b>5.70</b>	<b>6.37</b>	<b>6.27</b>	<b>-0.10</b>
<b>Total</b>	<b>260.61</b>	<b>238.46</b>	<b>243.44</b>	<b>243.68</b>	<b>0.24</b>

**District Level Staffing  
4 Year History**

<b>Administration</b>	<b>2010-2011</b>	<b>2011-2012</b>	<b>2012-2013</b>	<b>2013-2014</b>	<b>Change</b>
Superintendent	1.00	1.00	1.00	1.00	0.00
Assistant Superintendent	1.00	0.00	0.00	0.00	0.00
Assistant Superintendent Curriculum	0.00	1.00	1.00	1.00	0.00
Director Student Services	0.00	1.00	1.00	1.00	0.00
Business Administrator	1.00	1.00	1.00	1.00	0.00
Director of Human Resources	1.00	1.00	1.00	1.00	0.00
Director of Facilities and Planning	1.00	1.00	1.00	1.00	0.00
Director of Technology	1.00	1.00	1.00	1.00	0.00
Director of Community Education	1.00	1.00	0.00	0.00	0.00
Director of PE and Sport	1.00	1.00	1.00	1.00	0.00
Director of Transportation	1.00	1.00	1.00	1.00	0.00
<b>Subtotal</b>	<b>9.00</b>	<b>10.00</b>	<b>9.00</b>	<b>9.00</b>	<b>0.00</b>

<b>Curriculum and Assessment Support</b>	<b>2010-2011</b>	<b>2011-2012</b>	<b>2012-2013</b>	<b>2013-2014</b>	<b>Change</b>
Title I Coordinator	1.00	0.00	0.00	0.00	0.00
Professional Development Coordinator	1.00	0.00	0.00	0.00	0.00
Assessment Coordinator	1.00	0.60	1.00	1.00	0.00
DINI Coordinator	1.00	0.00	0.00	0.00	0.00
<b>Subtotal</b>	<b>4.00</b>	<b>0.60</b>	<b>1.00</b>	<b>1.00</b>	<b>0.00</b>

<b>Central Office Staff - Technology</b>	<b>2010-2011</b>	<b>2011-2012</b>	<b>2012-2013</b>	<b>2013-2014</b>	<b>Change</b>
Database Analyst	1.00	1.00	1.00	1.00	0.00
Network Administrator	1.00	1.00	1.00	1.00	0.00
District Systems Administrator	1.00	1.00	1.00	1.00	0.00
Support Technician	1.00	1.00	1.00	1.00	0.00
Support Technicians (2 part-time) replaces tech reps			1.00	1.00	0.00
<b>Subtotal</b>	<b>4.00</b>	<b>4.00</b>	<b>5.00</b>	<b>5.00</b>	<b>0.00</b>

<b>Central Office Staff Managers</b>	<b>2010-2011</b>	<b>2011-2012</b>	<b>2012-2013</b>	<b>2013-2014</b>	<b>Change</b>
Business Office Manager	1.00	1.00	1.00	1.00	0.00
Human Resource Manager	1.00	1.00	1.00	1.00	0.00
Payroll Manager	1.00	1.00	1.00	1.00	0.00
Director of Food Service	1.00	1.00	1.00	1.00	0.00
Facilities Coordinator	1.00	1.00	1.00	1.00	0.00
<b>Subtotal</b>	<b>5.00</b>	<b>5.00</b>	<b>5.00</b>	<b>5.00</b>	<b>0.00</b>

**District Level Staffing  
4 Year History**

<b>Central Office/District Administrative Assistants</b>	<b>2010-2011</b>	<b>2011-2012</b>	<b>2012-2013</b>	<b>2013-2014</b>	<b>Change</b>
Superintendent Assistant	2.00	1.00	1.00	1.00	0.00
Asst. Supt Admin Assistant	1.00	1.00	1.00	1.00	0.00
Director Student Services Admin Assistant	0.00	1.00	1.00	1.00	0.00
Business Administrator Admin Assistant	1.00	1.00	1.00	1.00	0.00
HR Administrative Assistants	3.00	3.00	3.00	3.00	0.00
Accounts Payable Admin Assistant	2.00	2.00	2.00	2.00	0.00
Federal Grants Admin Assistant	1.00	1.00	1.00	1.00	0.00
Payroll Admin Assistant	1.00	1.00	1.00	1.00	0.00
Special Education Admin Assistant	1.00	0.00	0.00	0.00	0.00
Professional Development Admin Assistant	1.00	1.00	1.00	1.00	0.00
Facilities and Maintenance Admin Assistant	1.00	1.00	1.00	1.00	0.00
Food Service Admin Assistant	1.00	1.00	1.00	1.00	0.00
Food Service Student Accounts	0.40	0.40	0.43	0.43	0.00
Food Service Sub	0.13				0.00
Food Service Dispatcher	0.86	0.86	0.86	0.57	-0.29
CCTV Taping		1.00	1.00	1.00	0.00
Receptionist	1.00	0.00	0.00	0.00	0.00
Subtotal	17.39	16.26	16.29	16.00	-0.29
<b>Special Services</b>	<b>2010-2011</b>	<b>2011-2012</b>	<b>2012-2013</b>	<b>2013-2014</b>	<b>Change</b>
District Speech and Language (LaChappelle, Teitel)	1.00	0.90	0.00	0.00	0.00
Special Education Strong Foundations (Nadeau)		0.60	0.60	0.73	0.13
OT Strong Foundations		0.10	0.10	0.10	0.00
SLP Strong Foundations		0.20	0.20	0.20	0.00
Tutors Strong Foundations (RMS)			1.58	1.50	-0.08
District Vision	1.00	1.00	1.00	1.00	0.00
District Hearing	0.70	0.70	0.60	0.60	0.00
Nurse Coordinator	0.10	0.10	0.10	0.10	0.00
District IA SPED ("new allocation")/Supt. Reserve		0.11	0.04	0.50	0.46
IDEA Set aside (Nora LeDuc)		0.08	0.00	0.00	0.00
21st Century Program Director			0.86	0.86	0.00
21st Century Site Director - CHS			0.57	0.57	0.00
21st Century Site Director - RMS			0.57	0.57	0.00
Extended Learning Coordinator Title I		0.71	0.86	0.86	0.00
Subtotal	2.80	4.50	7.08	7.59	0.51

**District Level Staffing  
4 Year History**

<b>Maintenance</b>					
Maintenance Manager		0.00	0.00	0.00	0.00
Central Office Custodian	0.50	0.25	0.36	0.38	0.02
Building and Grounds	1.00	1.00	1.00	1.00	0.00
Carpenter	1.00	1.00	1.00	1.00	0.00
Electrician	1.00	1.00	1.00	1.00	0.00
Grounds	1.00	0.00	0.00	0.00	0.00
Mechanic	0.00	0.60	0.00	0.00	0.00
HVAC	1.00	1.00	1.00	1.00	0.00
Plumber	1.00	1.00	1.00	1.00	0.00
<b>Subtotal</b>	<b>6.50</b>	<b>5.85</b>	<b>5.36</b>	<b>5.38</b>	<b>0.02</b>

<b>District Clerk of the Works</b>	<b>3.00</b>	<b>3.00</b>	<b>0.00</b>	<b>0.00</b>	<b>0.00</b>
------------------------------------	-------------	-------------	-------------	-------------	-------------

<b>Transportation</b>					
Field Trip Supervisor	1.00	1.00	1.00	0.80	-0.20
Trainer/Dispatcher	1.00	1.00	1.00	1.00	0.00
Special Ed Supervisor	1.00	0.00	0.00	0.00	0.00
Transportation Clerk		0.44	0.44	0.45	0.01
Transportation Mechanics	2.00	2.00	2.00	2.00	0.00
Bus Drivers Regular	13.99	13.46	13.99	14.35	0.36
Bus Driver Spare	0.13	0.25	0.25		-0.25
Bus Drivers Special Ed	9.87	10.27	11.11	10.39	-0.72
Bus Drivers Perm Sub	2.49	2.75	2.50	2.25	-0.25
Bus Monitors	5.53	5.85	5.99	5.73	-0.26
Bus Monitor	0.25	0.00	0.00	0.00	0.00
Courier	0.50	0.25	0.38	0.38	0.00
Occasional Driver	0.13				0.00
Crossing Guards	5.51	4.69	4.72	3.91	-0.81
Truancy	0.80	0.80	0.80	0.80	0.00
<b>Subtotal</b>	<b>44.20</b>	<b>42.76</b>	<b>44.18</b>	<b>42.06</b>	<b>-2.12</b>
<b>Total ALL District Level Staff</b>	<b>95.89</b>	<b>91.97</b>	<b>92.91</b>	<b>91.03</b>	<b>-1.88</b>

<b>Total ALL District Staff</b>	<b>846.20</b>	<b>777.23</b>	<b>785.51</b>	<b>789.05</b>	<b>3.54</b>
School Board and Clerk			10.00	11.00	
Autism Preschool Contracted			-1	-1	
			794.51	799.05	

**Elementary Level Staffing  
2011-2012, 2012-2013 and 2013-2014**

School	Principal				Assistant Principal				Admin Asst				Special Ed Coordinator			
	2011-2012	2012-2013	2013-2014	Change	2011-2012	2012-2013	2013-2014	Change	2011-2012	2011-2012	2013-2014	Change	2011-2012	2012-2013	2013-2014	Change
Beaver Meadow	1.00	1.00	1.00	0.00				0.00	1.00	1.00	1.00	0.00	0.50	0.50	0.50	0.00
District EH				0.00				0.00				0.00	0.50	0.50		-0.50
Broken Ground	1.00	1.00	1.00	0.00				0.00	1.00	1.00	1.00	0.00	0.50	0.50	0.50	0.00
Conant/Abbot-Downing	1.00	1.00	1.00	0.00	1.00	0.00		0.00	1.00	1.00	1.00	0.00	0.50	0.50	0.50	0.00
Dame/Mill Brook	1.00	1.00	1.00	0.00				0.00	1.00	1.00	1.00	0.00	0.50	0.50	0.50	0.00
Eastman				0.00				0.00	0.00			0.00				0.00
Kimball/Christa McAuliffe	0.50	1.00	1.00	0.00	0.50	0.00		0.00	1.00	1.00	1.00	0.00	0.25	0.50	0.50	0.00
Walker	0.50			0.00	0.50	0.00		0.00	1.00			0.00	0.25			0.00
Preschool				0.00				0.00				0.00	1.00	1.00	1.00	0.00
<b>Total</b>	<b>5.00</b>	<b>5.00</b>	<b>5.00</b>	<b>0.00</b>	<b>2.00</b>	<b>0.00</b>	<b>0.00</b>	<b>0.00</b>	<b>6.00</b>	<b>5.00</b>	<b>5.00</b>	<b>0.00</b>	<b>4.00</b>	<b>4.00</b>	<b>3.50</b>	<b>-0.50</b>

School	Guidance				Nurses 2011-				LPN, Health Asst 2011-				LPN Health Asst. 2012-				Elem School Psych 2011-			
	2011-2012	2012-2013	2013-2014	Change	2012	2012-2013	2013-2014	Change	2012	2012-2013	2013-14	Change	2012	2012-2013	2013-2014	Change				
Beaver Meadow	1.00	1.00	1.00	0.00	1.00	1.00	1.00	0.00	0.47			0.00								
Broken Ground	1.00	1.00	1.00	0.00	1.00	1.00	1.00	0.00	0.80			0.00								
Conant/Abbot-Downing	1.00	1.00	1.00	0.00	1.00	1.00	1.00	0.00				0.00								
Dame/Mill Brook	1.00	1.00	1.00	0.00	1.00	1.00	1.00	0.00			1.47	0.93	-0.54							
Eastman				0.00				0.00				0.00								
Kimball/Christa McAuliffe	0.50	1.00	1.00	0.00	0.60	1.00	1.00	0.40				0.00								
Walker	0.50			0.00	0.40			-0.40				0.00								
Preschool / Elem				0.00							0.47	0.47		2.10	2.00	2.00				
<b>Total</b>	<b>5.00</b>	<b>5.00</b>	<b>5.00</b>	<b>0.00</b>	<b>5.00</b>	<b>5.00</b>	<b>5.00</b>	<b>0.00</b>	<b>1.27</b>	<b>1.47</b>	<b>1.40</b>	<b>-0.07</b>	<b>2.10</b>	<b>2.00</b>	<b>2.00</b>	<b>0.00</b>				

School	Classroom Teachers				Reading Specialist				Literacy Teachers (Title I)				Elem. ELL Coord. /Tchr.			
	2011-2012	2012-2013	2013-2014	Change	2011-2012	2012-2013	2013-2014	Change	2012	2012-2013	2013-2014	Change	2011-2012	2012-2013	2013-2014	Change
Beaver Meadow	16.50	17.00	17.50	0.50	1.00	1.00	0.80	-0.20	0.00	0.00	0.20	0.20				
Broken Ground	19.00	17.00	17.00	0.00	1.00	1.00	0.60	-0.40	0.50	0.20	0.40	0.20	1.00	1.25	1.25	0.00
Conant/Abbot-Downing	20.00	20.00	20.50	0.50	1.00	1.00	1.00	0.00	0.00	0.00	0.00	0.00				0.00
Dame/Mill Brook	14.50	16.50	17.50	1.00	1.00	1.00	0.60	-0.40	0.00	0.00	0.40	0.40		0.25	0.25	0.00
Eastman	0.00			0.00				0.00				0.00				0.00
Kimball/Christa McAuliffe	11.00	19.50	19.50	0.00	0.50	1.00	0.80	-0.20			0.20	0.20				0.00
Walker	9.50			0.00	0.50			0.00	1.00	1.00	0.00	-1.00				0.00
Elementary				0.00				0.00				0.00	0.40	0.40	0.40	0.00
<b>Total</b>	<b>90.50</b>	<b>90.00</b>	<b>92.00</b>	<b>2.00</b>	<b>5.00</b>	<b>5.00</b>	<b>3.80</b>	<b>-1.20</b>	<b>1.50</b>	<b>1.20</b>	<b>1.20</b>	<b>0.00</b>	<b>1.40</b>	<b>1.90</b>	<b>1.90</b>	<b>0.00</b>

School	Art Teachers				Phys Ed Teachers				Music Teachers 2011-				Project SEE Coordinator			
	2011-2012	2012-2013	2013-2014	Change	2011-2012	2012-2013	2013-2014	Change	2012	2012-2013	2013-2014	Change	2011-2012	2012-2013	2013-2014	Change
Beaver Meadow	0.58	1.00	1.00	0.00	1.00	1.00	1.00	0.00	0.90	1.00	1.00	0.00				
Broken Ground	1.00	1.00	1.00	0.00	0.63	1.00	1.00	0.00	1.62	1.50	1.50	0.00				
Conant/Abbot-Downing	0.80	1.00	1.00	0.00	1.00	1.00	1.00	0.00	1.00	1.00	1.00	0.00				
Dame/Mill Brook	0.62	0.50	0.50	0.00	0.37	0.50	0.50	0.00	0.38	0.50	0.50	0.00				
Eastman				0.00				0.00				0.00				
Kimball/Christa McAuliffe	0.58	1.00	1.00	0.00	0.57	1.00	1.00	0.00	0.70	1.00	1.00	0.00				
Walker	0.42			0.00	0.43			0.00	0.40			0.00				

**Elementary Level Staffing  
2011-2012, 2012-2013 and 2013-2014**

Elementary				0.00					0.00				0.00	0.00	1.00	1.00	1.00	0.00
Total	4.00	4.50	4.50	0.00	4.00	4.50	4.50	0.00	5.00	5.00	5.00	0.00	1.00	1.00	1.00	0.00		

School	Media Tech teachers 2011-				Autism Teacher 2011-				Occ. Therapist				Elementary COTA			
	2012	2012-2013	2013-2014	Change	2012	2012-2013	2013-2014	Change	2011-2012	2012-2013	2013-2014	Change	2011-2012	2012-2013	2013-2014	Change
Beaver Meadow	0.00	1.00	1.00	0.00												
Broken Ground	0.00	0.50	0.50	0.00												
Conant/Abbot-Downing	0.00	1.00	1.00	0.00												
Dame/Mill Brook	0.00	0.50	0.50	0.00												
Eastman	0.00	0.00		0.00												
Kimball/Christa McAuliffe	0.00	1.00	1.00	0.00												
Walker	0.00	0.00		0.00												
Preschool	0.00	0.00		0.00	1.00	1.00	1.00	0.00	1.30	1.30	1.30	0.00				
Elementary	0.00	0.00		0.00	3.00	3.00	3.00	0.00	1.80	1.80	1.80	0.00	1.00	1.00	1.00	0.00
Total	0.00	4.00	4.00	0.00		4.00	4.00	4.00	3.10	3.10	3.10	0.00	1.00	1.00	1.00	0.00

School	Elem Math Specialist				3 R Teacher				Elementary Spec Ed LD				Elementary Special Ed			
	2011-2012	2012-2013	2013-2014	Change	2011-2012	2012-2013	2013-2014	Change	2011-2012	2012-2013	2013-2014	Change	SLP2011-2012	2012-2013	2013-2014	Change
Beaver Meadow					1.00	1.00	1.00	0.00	3.00	3.00	3.00	0.00	1.00	1.00	1.00	0.00
Broken Ground									3.50	3.20	3.00	-0.20	1.00	0.80	1.00	0.20
Conant/Abbot-Downing									3.30	3.00	3.00	0.00	1.30	1.40	1.40	0.00
Dame/Mill Brook									2.00	2.90	3.00	0.10	1.10	1.10	1.00	-0.10
Eastman									0.00	0.00		0.00	0.00			0.00
Kimball/Christa McAuliffe									1.70	2.70	2.70	0.00	0.60	1.10	1.10	0.00
Walker									1.00	0.00		0.00	0.50	0.00		0.00
Preschool									3.35	3.35	3.35	0.00	2.90	2.90	2.90	0.00
Elementary	1.00	1.00	1.00	0.00								0.00				0.00
Total	1.00	1.00	1.00	0.00	1.00	1.00	1.00	0.00	17.85	18.15	18.05	-0.10	8.40	8.30	8.40	0.10

District

|

**Elementary Level Staffing  
2011-2012, 2012-2013 and 2013-2014**

School	Educational Assistants				Autism IA				Student Support IA				Project SEE IA			
	2011-2012	2012-2013	2013-2014	Change	2011-2012	2012-2013	2013-2014	Change	2011-2012	2012-2013	2013-2014	Change	2011-2012	2012-2013	2013-2014	Change
Beaver Meadow	8.30	7.51	8.44	0.93	2.00	2.00	2.00	0.00	1.00	0.93	0.93	0.00				
Broken Ground	9.09	10.95	10.88	-0.07	3.00	2.00	2.00	0.00	0.93	0.93	0.93	0.00				
Conant/Abbot-Downing	8.23	7.30	7.69	0.39	2.93	2.93	2.00	-0.93	0.93	0.93	0.93	0.00				
Dame/Mill Brook	7.08	11.16	11.38	0.22	1.00	2.00	2.00	0.00	0.93	0.93	0.93	0.00				
Eastman				0.00				0.00				0.00				
Kimball/Christa McAuliffe	3.51	6.85	7.27	0.42			0.93	0.93	1.00	0.93	0.93	0.00				
Walker	3.34			0.00				0.00	0.93	0.00		0.00				
Elementary				0.00				0.00				0.00	2.55	2.55	2.55	0.00
Health Assistants	1.00			0.00				0.00				0.00				
<b>Subtotal K-5</b>	<b>40.55</b>	<b>43.77</b>	<b>45.66</b>	<b>1.89</b>	<b>8.93</b>	<b>8.93</b>	<b>8.93</b>	<b>0.00</b>	<b>5.72</b>	<b>4.65</b>	<b>4.65</b>	<b>0.00</b>	<b>2.55</b>	<b>2.55</b>	<b>2.55</b>	<b>0.00</b>
Preschool BMS																
Preschool Eastman																
Preschool Conant																
Preschool Outreach	0.74	0.74	0.51	-0.23												
Preschool SPED	10.22	8.76	9.12	0.36												
Preschool Temp				0.00												
<b>Subtotal Preschool</b>	<b>10.96</b>	<b>9.50</b>	<b>9.63</b>	<b>0.13</b>												
3R Program	1.86	1.86	2.72	0.86												
<b>Total</b>	<b>53.37</b>	<b>55.13</b>	<b>58.01</b>	<b>2.88</b>												

School	Reading Tutors				Math Tutors				ELL Tutors				Title I Preschool201			
	2011-2012	2012-2013	2013-2014	Change	2011-2012	2012-2013	2013-2014	Change	2010-2011	2012-2013	2013-2014	Change	1-2012	2012-2013	2013-2014	Change
Beaver Meadow	2.43	2.29	2.29	0.00	1.72	1.72	1.72	0.00	0.57			0.00	0.00	0.00	0.00	0.00
Broken Ground	2.36	3.22	3.22	0.00	0	0	1.18	1.18	1.72			0.00				
Conant/Abbot-Downing	3.29	3.29	3.29	0.00	0.86	0.86	0.86	0.00	0.77			0.00				
Dame/Mill Brook	3.61	2.91	3.02	0.11				0.00	1.88			0.00				
Eastman				0.00				0.00				0.00				
Kimball/Christa McAuliffe		0.86	4.04	3.18		0.57	0.86	0.29	0.35			0.00				
Walker	0.86			0.00	0.57			0.00	0.35			0.00				
Elementary				0.00				0.00				0.00				
<b>Total</b>	<b>12.55</b>	<b>12.57</b>	<b>15.86</b>	<b>3.29</b>	<b>3.15</b>	<b>3.15</b>	<b>4.62</b>	<b>1.47</b>	<b>5.64</b>	<b>5.94</b>	<b>5.93</b>	<b>0.30</b>	<b>0.00</b>	<b>0.00</b>	<b>0.00</b>	<b>0.00</b>

School	Media PA				Tech PA 2011-				Coordinator20				Dispatch 2011-			
	2011-2012	2012-2013	2013-2014	Change	2012	2012-2013	2013-2014	Change	11-2012	2012-2013	2013-2014	Change	2012	2012-2013	2013-2014	Change
Beaver Meadow	1.00	0.00	0.00	0.00	1.00	1.00	1.00	0.00								
Broken Ground	1.00	0.00	0.00	0.00	1.00	1.00	1.00	0.00								
Conant/Abbot-Downing	1.00	0.00	0.00	0.00	1.00	1.00	1.00	0.00								
Dame/Mill Brook	1.00	1.00	1.00	0.00	0.60	0.60	0.60	0.00	1.46	0.75	0.75	0.00				
Eastman				0.00				0.00								
Kimball/Christa McAuliffe	0.50	0.00	0.00	0.00	0.40	1.00	1.00	0.00								
Walker	0.50	0.00	0.00	0.00	0.60			0.00	0.71	0.00	0.00	0.00				
Elementary				0.00				0.00					0.36	0.36	0.36	0.00
<b>Total</b>	<b>5.00</b>	<b>1.00</b>	<b>1.00</b>	<b>0.00</b>	<b>4.60</b>	<b>4.60</b>	<b>4.60</b>	<b>0.00</b>	<b>2.17</b>	<b>0.75</b>	<b>0.75</b>	<b>0.00</b>	<b>0.36</b>	<b>0.36</b>	<b>0.36</b>	<b>0.00</b>



**Elementary Level Staffing  
2011-2012, 2012-2013 and 2013-2014**

School	Head Custodians				Custodians				Elem Cook				Food Srv Asst			
	2011-2012	2012-2013	2013-2014	Change	2011-2012	2012-2013	2013-2014	Change	2011-2012	2012-2013	2013-2014	Change	2011	2012	2013-2014	Change
Beaver Meadow	1.00	1.00	1.00	0.00	2.00	2.00	2.00	0.00	1.00	0.93	0.93	0.00	0.73	0.67	0.67	0.00
Broken Ground	1.00	1.00	1.00	0.00	2.00	2.00	2.00	0.00	0.93	0.93	0.93	0.00	1.23	0.70	0.67	-0.03
Conant/Abbot-Downing	1.00	1.00	1.00	0.00	1.75	2.00	2.00	0.00	0.93	0.93	0.93	0.00	0.53	0.53	0.53	0.00
Dame/Mill Brook	1.00	1.00	1.00	0.00	1.00	2.00	2.00	0.00	0.87	0.93	0.93	0.00		0.00	0.47	0.47
Eastman				0.00				0.00				0.00	0.00	0.00		0.00
Kimball/Christa McAuliffe		1.00	1.00	0.00	1.50	2.00	2.00	0.00	0.93	0.93	0.93	0.00		0.53	0.53	0.00
Walker	1.00			0.00	0.50			0.00	0.90			0.00				0.00
Elementary				0.00				0.00	0.67	0.67	0.67	0.00				0.00
<b>Total</b>	<b>5.00</b>	<b>5.00</b>	<b>5.00</b>	<b>0.00</b>	<b>8.75</b>	<b>10.00</b>	<b>10.00</b>	<b>0.00</b>	<b>6.23</b>	<b>5.32</b>	<b>5.32</b>	<b>0.00</b>	<b>2.49</b>	<b>2.43</b>	<b>2.87</b>	<b>0.44</b>